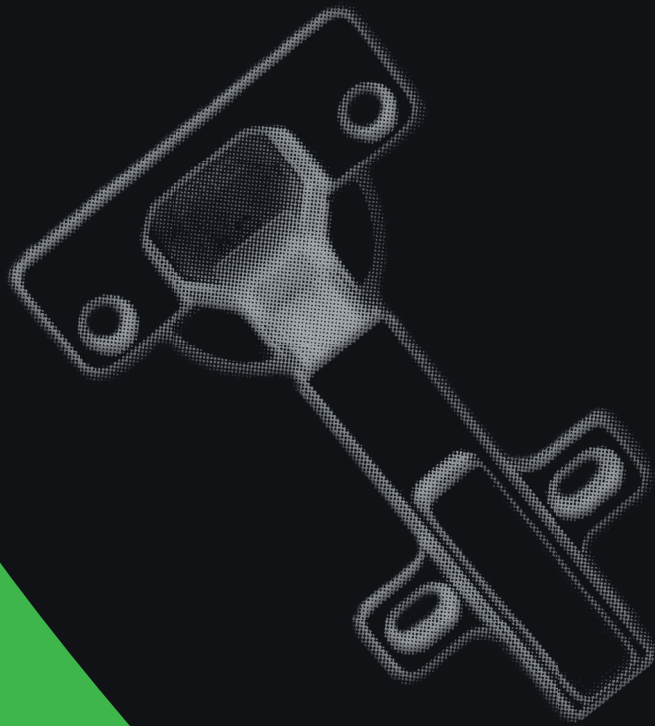


DANCO[®]
MADE IN ITALY



5 SERIE 500

dal 1956

i nostri prodotti hanno un'anima
tutta italiana.

since 1956

our products have a spirit
all italian.



SERIE 500



Indice Index

CERNIERE
HINGES

pag. 05
page 05



CASSE
CUPS

pag. 19
page 19



BASSETTE
MOUNTING PLATES

pag. 29
page 29



ESEMPIO D'ORDINE
EXAMPLE OF ORDER

pag. 38
page 38



NUMERO DI CERNIERE PER PORTA

NUMBER OF HINGES FOR DOOR

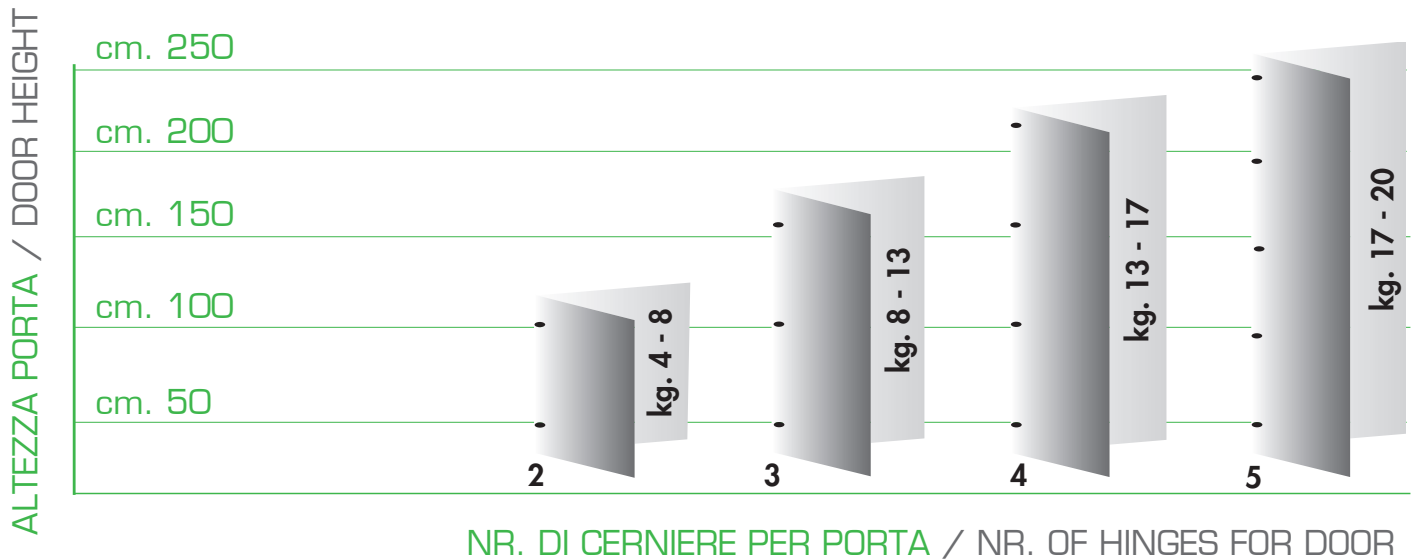


TABELLE SPAZIO NECESSARIO PER ANTE SENZA INTERFERENZE TRA LORO

TABLES SPACE NECESSARY TO HAVE A DOOR WITHOUT INTERFERENCE BETWEEN THE OTHERS

SERIE 500 Ø 35										
T	16	17	18	19	20	21	22	23	24	25
D 3	0,52	0,72	0,95	1,22	1,53	1,89	2,31	2,84	3,57	4,38
D 4	0,50	0,70	0,92	1,18	1,47	1,81	2,21	2,66	3,25	3,97
D 5	0,49	0,67	0,89	1,14	1,42	1,75	2,12	2,54	3,05	3,67
D 6	0,47	0,65	0,86	1,11	1,38	1,69	2,04	2,44	2,90	3,44
D 7	0,46	0,64	0,84	1,07	1,34	1,64	1,97	2,35	2,78	3,27
D 8	0,45	0,62	0,82	1,04	1,30	1,59	1,91	2,27	2,68	3,13

T = SPESSORE ANTA
THICKNESS OF THE DOOR

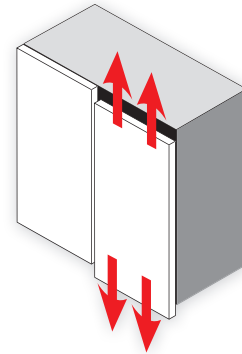
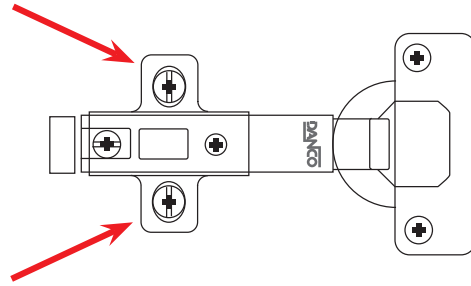
D = DISTANZA FORO ANTA
DRILLING DISTANCE IN THE DOOR

L = LUCE FRA ANTA E FIANCO
DISTANCE BETWEEN THE DOOR AND THE SIDE

SERIE 500 Ø 40															L		
T	20	21	22	23	24	25	26	27	28	29	30	31	32	33	34	35	
D 3	0,33	0,43	0,57	0,70	0,86	1,02	1,20	1,41	2,01	1,84	2,10	2,36	2,65	2,94	5,11	6,05	0,40
D 4	0,33	0,43	0,56	0,69	0,85	1,00	1,18	1,39	1,59	1,81	2,06	2,32	2,61	2,89	4,39	5,35	0,40
D 5	0,32	0,42	0,55	0,68	0,83	0,99	1,17	1,36	1,56	1,78	2,03	2,29	2,57	2,84	3,75	4,68	0,40
D 6	0,32	0,42	0,54	0,67	0,82	0,98	1,15	1,34	1,54	1,76	2,00	2,25	2,52	2,80	3,20	4,06	0,40
D 7	0,31	0,41	0,53	0,66	0,81	0,96	1,14	1,32	1,53	1,75	1,97	2,22	2,48	2,76	2,95	3,50	0,40
D 8	0,31	0,41	0,52	0,66	0,79	0,94	1,13	1,30	1,51	1,72	1,94	2,18	2,44	2,72	2,90	3,25	0,40
D 9	0,30	0,40	0,52	0,65	0,78	0,93	1,11	1,28	1,49	1,69	1,89	2,15	2,40	2,68	2,85	3,20	0,40
D 10	0,30	0,40	0,51	0,64	0,77	0,92	1,10	1,26	1,46	1,67	1,89	2,12	2,37	2,64	2,80	3,15	0,40
D 11	0,29	0,39	0,50	0,63	0,76	0,91	1,08	1,25	1,44	1,64	1,86	2,09	2,34	2,60	2,78	3,06	0,40
D 12	0,29	0,39	0,50	0,62	0,73	0,90	1,06	1,23	1,42	1,62	1,84	2,06	2,30	2,56	2,72	3,03	0,40
D 13	0,29	0,38	0,49	0,61	0,74	0,89	1,05	1,22	1,40	1,60	1,81	2,03	2,27	2,53	2,68	2,96	0,40
D 14	0,28	0,38	0,48	0,60	0,73	0,88	1,03	1,20	1,38	1,58	1,79	2,01	2,24	2,49	2,65	2,92	1,40

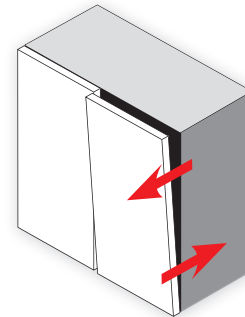
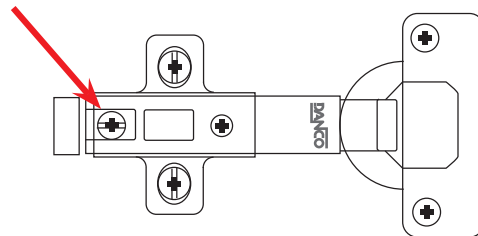
SISTEMI DI REGOLAZIONE ADJUSTMENT SYSTEMS

REGOLAZIONE VERTICALE VERTICAL ADJUSTMENT



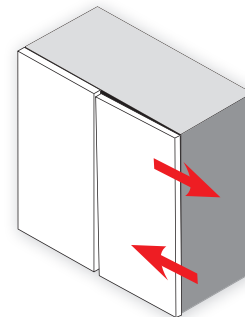
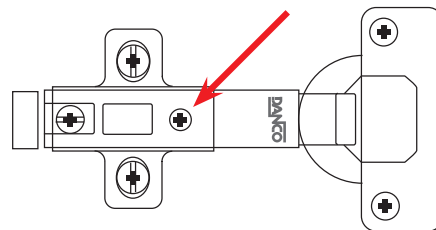
+/- 2 mm

REGOLAZIONE FRONTALE FRONTAL ADJUSTMENT



- 0/+5 mm

REGOLAZIONE LATERALE DI COPERTURA LATERAL OVERLAY ADJUSTMENT



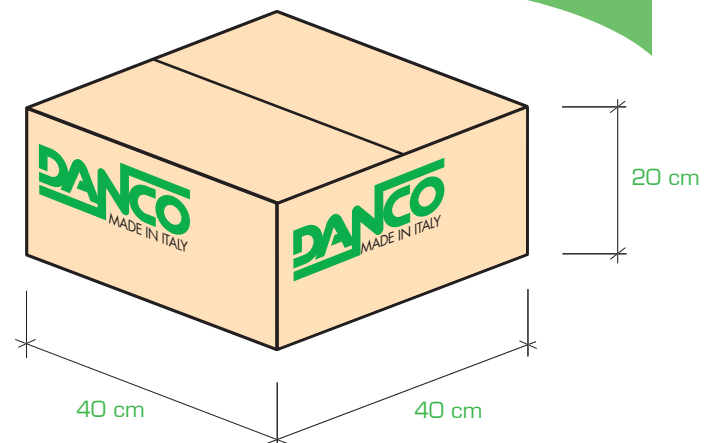
-1/+5 mm

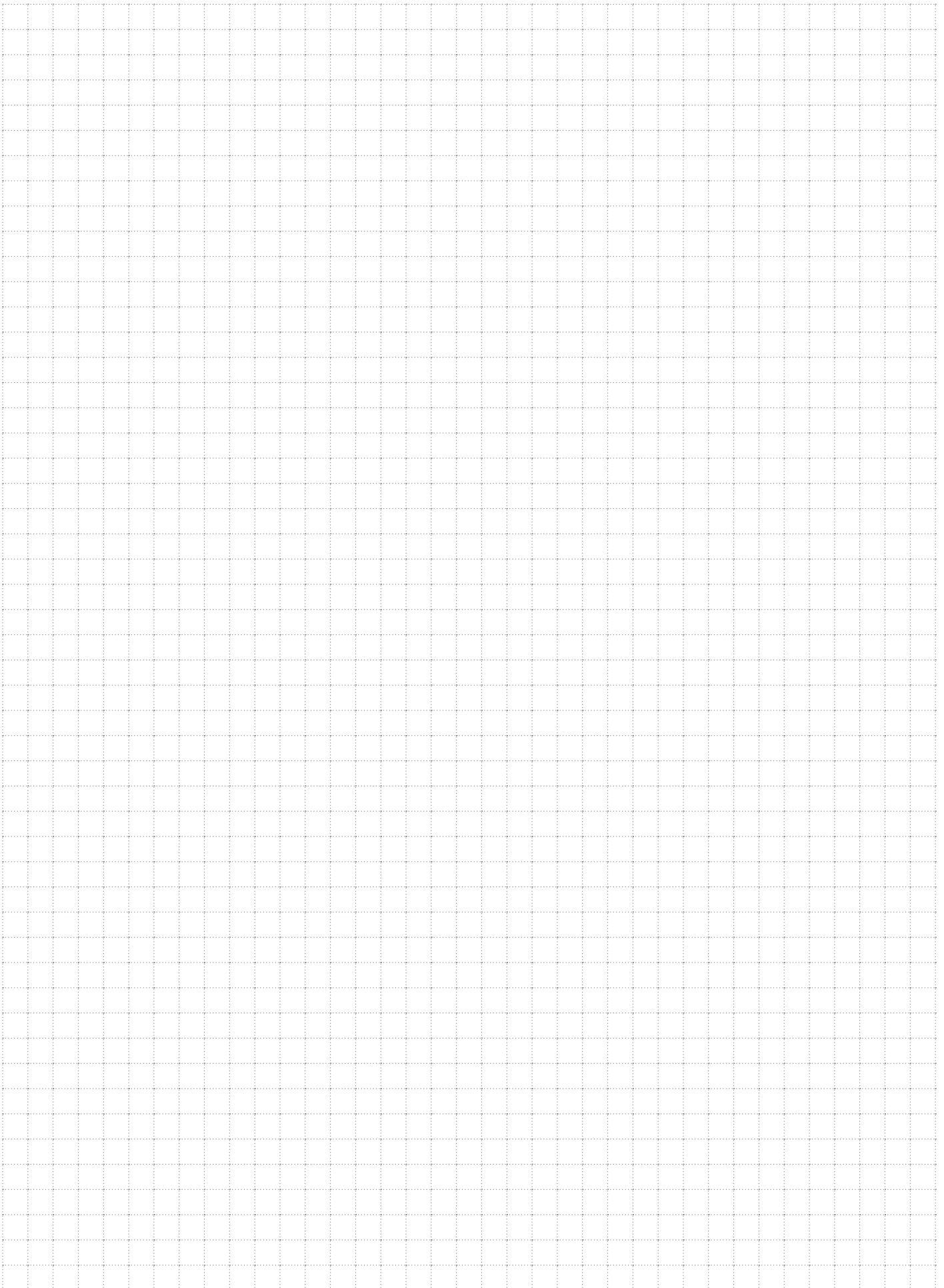
IMBALLO

PACKING

CONTENUTO / CONTENTS

SERIE 500 - 550	CERNIERE/HINGES	250
SERIE 511 - 512 - 513 - 516 - 519	CERNIERE/HINGES	200
SERIE 518	CERNIERE/HINGES	200
SERIE 514	CERNIERE/HINGES	100





CERNIERE HINGES

SERIE

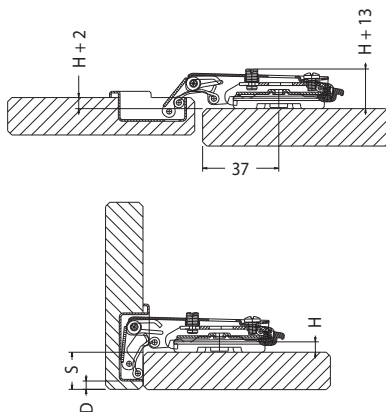
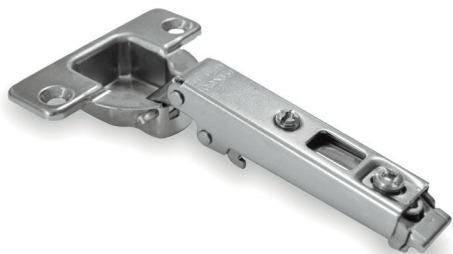
500

CERNIERE A CHIUSURA AUTOMATICA APERTURA 90°

SELF CLOSING HINGES OPENING 90°

500 P 4 4

Braccetto in acciaio, collo (P) Piano.
Steel, crank (P) Straight.



FORO ANTA (D)
DISTANCE IN THE
DOOR (D)

	3	4	5	6	7	8
4	17	18	19	20	21	22
5	16	17	18	19	20	21
6	15	16	17	18	19	20
7	14	15	16	17	18	19
8	13	14	15	16	17	18
9	12	13	14	15	16	17
10	11	12	13	14	15	16

H = 18 + D - S

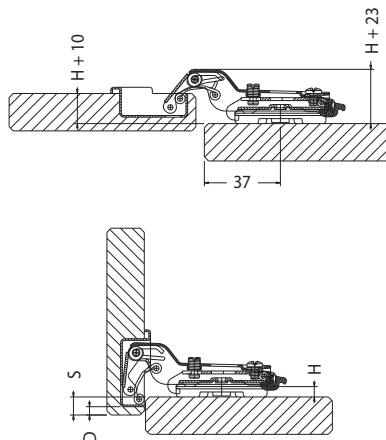
550 P 4 4

Braccetto in acciaio, collo (P) Piano, con
regolazione a camma.
Steel, crank (P) Straight, screw by cam.



500 M 4 4

Braccetto in acciaio, collo (M) Medio.
Steel, crank (M) Medium.



FORO ANTA (D)
DISTANCE IN THE
DOOR (D)

	3	4	5	6	7	8
4	9	10	11	12	13	14
5	8	9	10	11	12	13
6	7	8	9	10	11	12
7	6	7	8	9	10	11
8	5	6	7	8	9	10
9	4	5	6	7	8	9
10	3	4	5	6	7	8

H = 10 + D - S

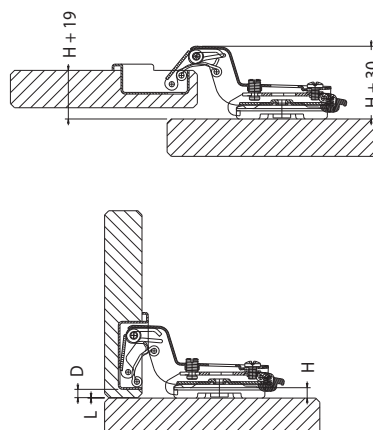
550 M 4 4

Braccetto in acciaio, collo (M) Medio, con
regolazione a camma.
Steel, crank (M) Medium, screw by cam.



500 C 4 4

Braccetto in acciaio, collo (C) Collo alto.
Steel, crank (C) Tall.



FORO ANTA (D)
DISTANCE IN THE
DOOR (D)

	3	4	5	6	7	8
4	0	1	2	3	4	5
5		0	1	2	3	4
6			0	1	2	3
7				0	1	2
8					0	1
9						0
10						

H = 1 + D + L

550 C 4 4

Braccetto in acciaio, collo (C) Collo alto, con
regolazione a camma.
Steel, crank (C) Tall, screw by cam.

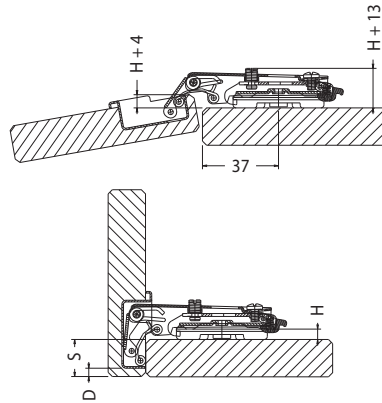


CERNIERE A CHIUSURA AUTOMATICA APERTURA 110°

SELF CLOSING HINGES OPENING 110°

500 P 4 4

Braccetto in acciaio, collo (P) Piano.
Steel, crank (P) Straight.



FORO ANTA (D)
DISTANCE IN THE
DOOR (D)

	3	4	5
4	17	18	19
5	16	17	18
6	15	16	17
7	14	15	16
8	13	14	15
9	12	13	14
10	11	12	13

SPESSORE BASETTA (H)
THICKNESS OF MOUNTING PLATE (H)

H = 18 + D - S

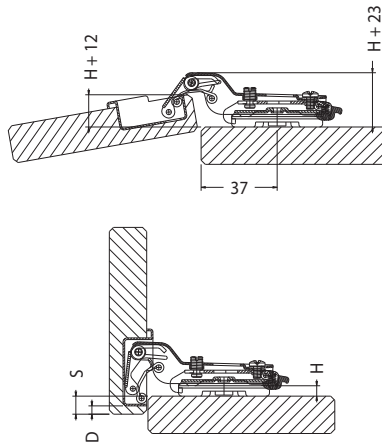
550 P 4 4

Braccetto in acciaio, collo (P) Piano, con
regolazione a camma.
Steel, crank (P) Straight, screw by cam.



500 M 4 4

Braccetto in acciaio, collo (M) Medio.
Steel, crank (M) Medium.



FORO ANTA (D)
DISTANCE IN THE
DOOR (D)

	3	4	5
4	9	10	11
5	8	9	10
6	7	8	9
7	6	7	8
8	5	6	7
9	4	5	6
10	3	4	5

SPESSORE BASETTA (H)
THICKNESS OF MOUNTING PLATE (H)

H = 10 + D - S

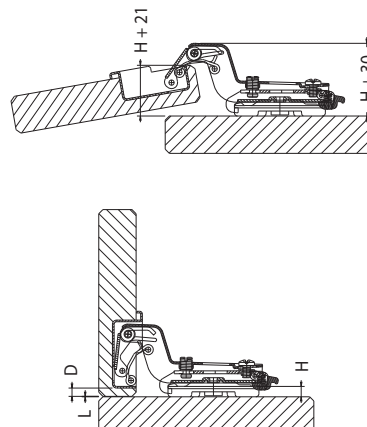
550 M 4 4

Braccetto in acciaio, collo (M) Medio, con
regolazione a camma.
Steel, crank (M) Medium, screw by cam.



500 C 4 4

Braccetto in acciaio, collo (C) Collo alto.
Steel, crank (C) Tall.



FORO ANTA (D)
DISTANCE IN THE
DOOR (D)

	3	4	5
4	0	1	2
5		0	1
6			0
7			
8			
9			
10			

SPESSORE BASETTA (H)
THICKNESS OF MOUNTING PLATE (H)

H = 1 + D + L

550 C 4 4

Braccetto in acciaio, collo (C) Collo alto, con
regolazione a camma.
Steel, crank (C) Tall, screw by cam.

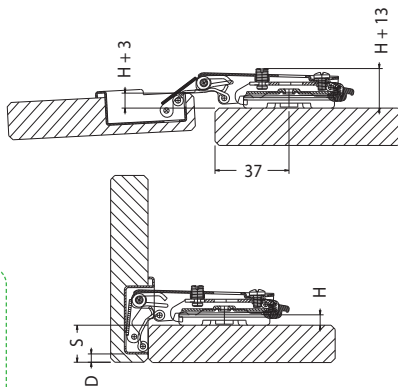


CERNIERE A CHIUSURA AUTOMATICA

SELF CLOSING HINGES

500 90 P 4 4

Braccetto in acciaio, collo (P) Piano.
Steel, crank (P) Straight.



FORO ANTA (D)
DISTANCE IN THE DOOR (D)

	3	4	5	6	7	8	9	10	11	12	13	14
4	22	23	24	25	26	27	28	29	30	31	32	33
5	21	22	23	24	25	26	27	28	29	30	31	32
6	20	21	22	23	24	25	26	27	28	29	30	31
7	19	20	21	22	23	24	25	26	27	28	29	30
8	18	19	20	21	22	23	24	25	26	27	28	29
9	17	18	19	20	21	22	23	24	25	26	27	28
10	16	17	18	19	20	21	22	23	24	25	26	27

SPessore Basetta (H)
THICKNESS OF MOUNTING PLATE (H)

H = 23 + D - S

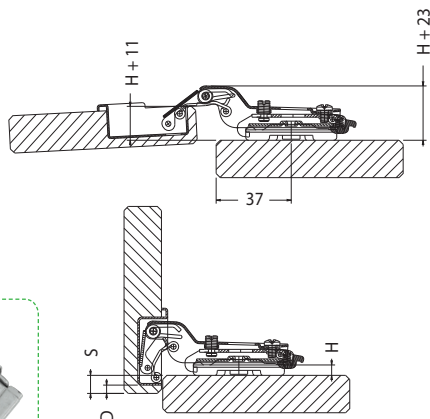
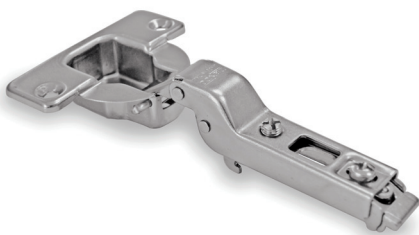
550 90 P 4 4

Braccetto in acciaio, collo (P) Piano, con regolazione a camma.
Steel, crank (P) Straight, screw by cam.



500 90 M 4 4

Braccetto in acciaio, collo (M) Medio.
Steel, crank (M) Medium.



FORO ANTA (D)
DISTANCE IN THE DOOR (D)

	3	4	5	6	7	8	9	10	11	12	13	14
4	14	15	16	17	18	19	20	21	22	23	24	25
5	13	14	15	16	17	18	19	20	21	22	23	24
6	12	13	14	15	16	17	18	19	20	21	22	23
7	11	12	13	14	15	16	17	18	19	20	21	22
8	10	11	12	13	14	15	16	17	18	19	20	21
9	9	10	11	12	13	14	15	16	17	18	19	20
10	8	9	10	11	12	13	14	15	16	17	18	19

SPessore Basetta (H)
THICKNESS OF MOUNTING PLATE (H)

H = 15 + D - S

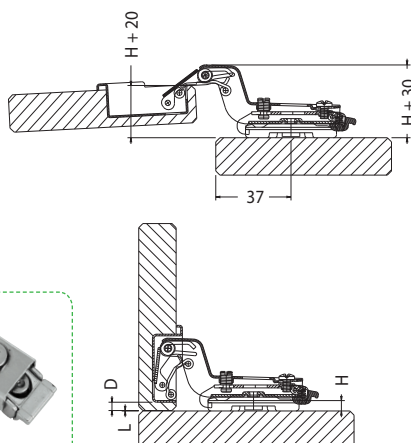
550 90 M 4 4

Braccetto in acciaio, collo (M) Medio, con regolazione a camma.
Steel, crank (M) Medium, screw by cam.



500 90 C 4 4

Braccetto in acciaio, collo (C) Collo alto.
Steel, crank (C) Tall.



FORO ANTA (D)
DISTANCE IN THE DOOR (D)

	3	4	5	6	7	8	9	10	11	12	13	14
4	5	6	7	8	9	10	11	12	13	14	15	16
5	4	5	6	7	8	9	10	11	12	13	14	15
6	3	4	5	6	7	8	9	10	11	12	13	14
7	2	3	4	5	6	7	8	9	10	11	12	13
8	1	2	3	4	5	6	7	8	9	10	11	12
9	0	1	2	3	4	5	6	7	8	9	10	11
10	0	1	2	3	4	5	6	7	8	9	10	11

SPessore Basetta (H)
THICKNESS OF MOUNTING PLATE (H)

H = 6 + D - S

550 90 C 4 4

Braccetto in acciaio, collo (C) Collo alto, con regolazione a camma.
Steel, crank (C) Tall, screw by cam.

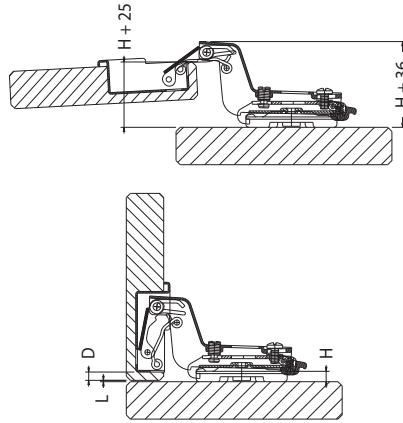
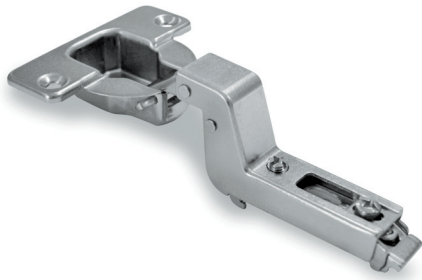


APERTURA 93° PER ANTINE DI FORTE SPESSORE Ø 40

OPENING 93° FOR HIGH THICKNESS DOORS Ø 40

500 90 A 4 4

Braccetto in zama, collo (A) Supercollo.
Zamak, crank (A) Supercrank.



FORO ANTA (D)
DISTANCE IN THE
DOOR (D)

	3	4	5	6	7	8	9	10	11	12	13	14
4	0	1	2	3	4	5	6	7	8	9	10	11
5		0	1	2	3	4	5	6	7	8	9	10
6			0	1	2	3	4	5	6	7	8	9
7				0	1	2	3	4	5	6	7	8
8					0	1	2	3	4	5	6	7
9						0	1	2	3	4	5	6
10							0	1	2	3	4	5

SPESORE BASETTE (H)
THICKNESS OF MOUNTING PLATE (H)

H = 1 + D + L

Note
Notes

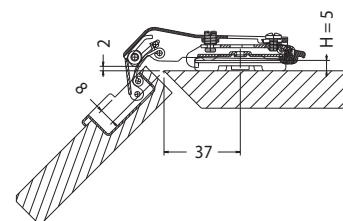
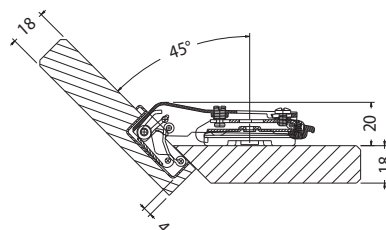
Grid area for notes.

CERNIERE A CHIUSURA AUTOMATICA APERTURA 90° PER ANGOLI 45°

SELF CLOSING HINGES OPENING 90° CORNERS 45°

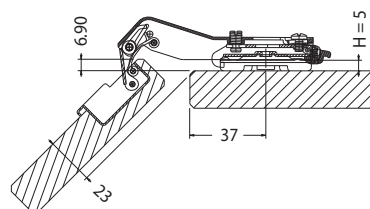
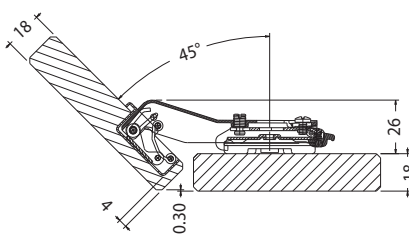
511 P 4 4

Braccetto in zama, collo (P) Piano.
Zamak, crank (P) Straight.



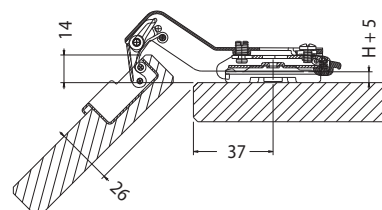
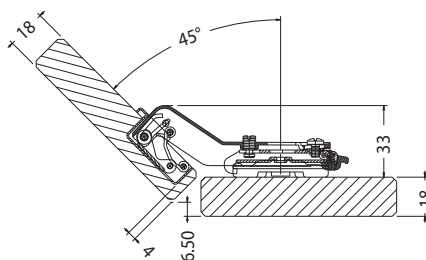
511 M 4 4

Braccetto in zama, collo (M) Medio.
Zamak, crank (M) Medium.



511 C 4 4

Braccetto in zama, collo (C) Collo alto.
Zamak, crank (C) Tall.



CERNIERE A CHIUSURA AUTOMATICA APERTURA 90°

SELF CLOSING HINGES OPENING 90°

512

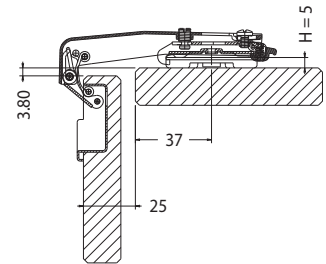
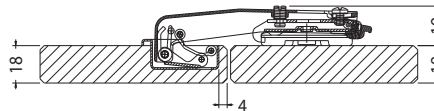


L

4

4

Per fissaggio su montante, foratura modulo 37x32 mm. tipo (L).
To fix on the blind corners, drill for modulus 37x32 mm. type (L).



CERNIERE A CHIUSURA AUTOMATICA APERTURA 90° PER ANGOLI 30°

SELF CLOSING HINGES OPENING 90° CORNERS 30°

513

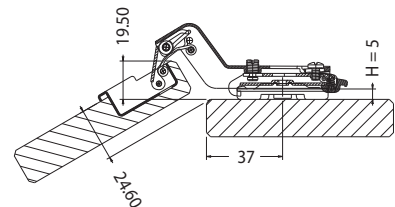
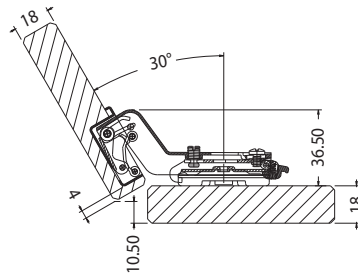


C

4

4

Braccetto in zama, collo (C) Collo alto.
Zamak, crank (C) Tall.



CERNIERE A CHIUSURA AUTOMATICA APERTURA 90° PER ANGOLI 37°

SELF CLOSING HINGES OPENING 90° CORNERS 37°

516

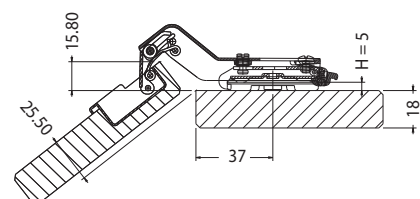
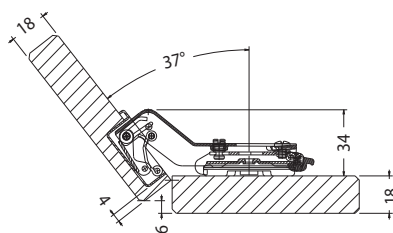


M

4

4

Braccetto in zama, collo (M) Medio.
Zamak, crank (C) Medium.

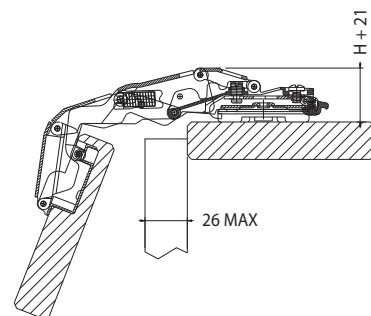
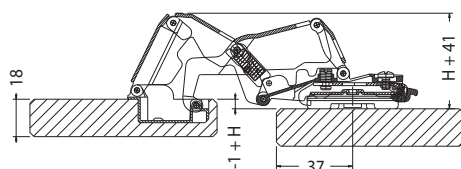
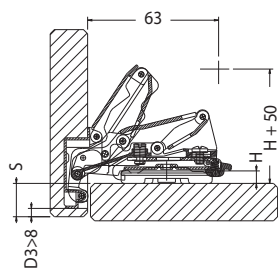
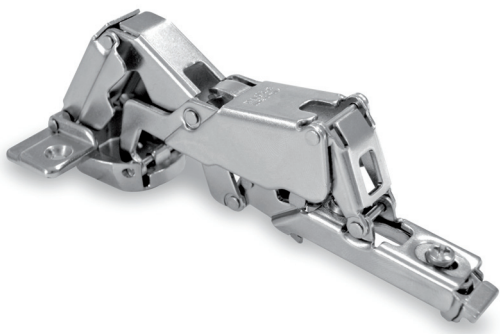


CERNIERE A CHIUSURA AUTOMATICA APERTURA 165°

SELF CLOSING HINGES OPENING 165°

514 P 4 4

Braccetto in acciaio, collo (P) Piano.
Steel, crank (P) Straight.



FORO ANTA (D)
DISTANCE IN THE
DOOR (D)

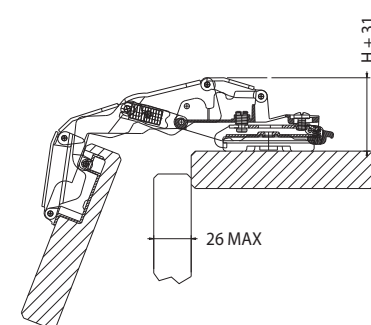
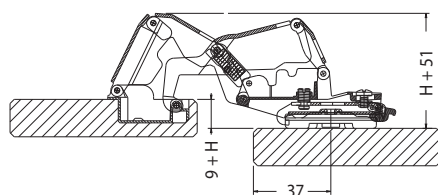
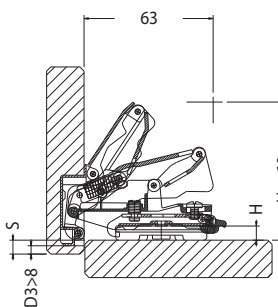
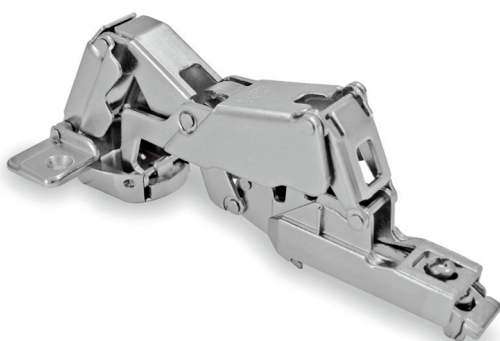
	3	4	5	6	7	8
4	17	18	19	20	21	22
5	16	17	18	19	20	21
6	15	16	17	18	19	20
7	14	15	16	17	18	19
8	13	14	15	16	17	18
9	12	13	14	15	16	17
10	11	12	13	14	15	16

SPESSORE BASETTA (H)
THICKNESS OF MOUNTING PLATE (H)

H = 18 + D - S

514 M 4 4

Braccetto in zama, collo (M) Medio.
Zamak, crank (M) Medium.



FORO ANTA (D)
DISTANCE IN THE
DOOR (D)

	3	4	5	6	7	8
4	9	10	11	12	13	14
5	8	9	10	11	12	13
6	7	8	9	10	11	12
7	6	7	8	9	10	11
8	5	6	7	8	9	10
9	4	5	6	7	8	9
10	3	4	5	6	7	8

SPESSORE BASETTA (H)
THICKNESS OF MOUNTING PLATE (H)

H = 10 + D - S

CERNIERE A CHIUSURA AUTOMATICA APERTURA 110°

SELF CLOSING HINGES OPENING 110°

518

AN

P

4

4

Braccetto in zama, collo (P) Piano.
Zamak, crank (P) Straight.

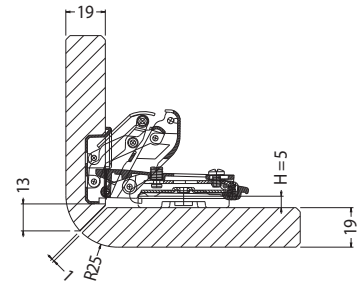
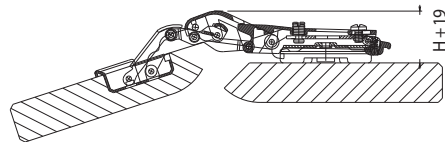
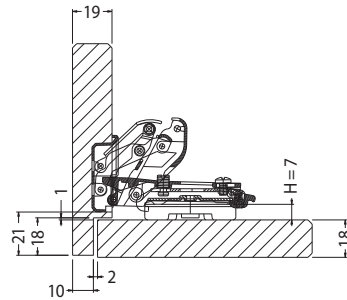
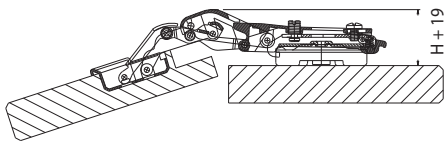
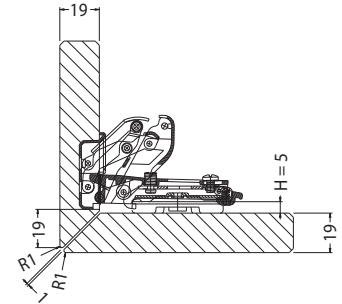
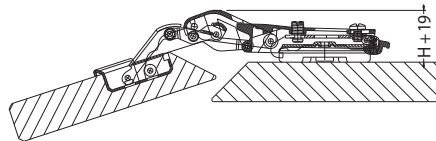
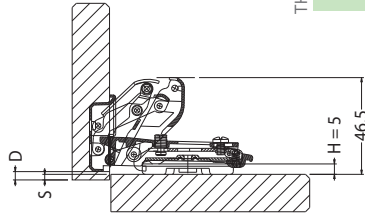
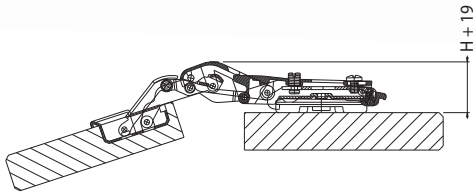


FORO ANTA (D)
DISTANCE IN THE DOOR (D)

SPESSORE BASETTA (H)
THICKNESS OF MOUNTING PLATE (H)

	3	4	5	6	7	8	9	10	11	12	13	14	15	16	17	18	19	20
4	5	6	7	8	9	10	11	12	13	14	15	16	17	18	19	20		
5	4	5	6	7	8	9	10	11	12	13	14	15	16	17	18	19		
6	3	4	5	6	7	8	9	10	11	12	13	14	15	16	17	18		
7	2	3	4	5	6	7	8	9	10	11	12	13	14	15	16	17		
8	1	2	3	4	5	6	7	8	9	10	11	12	13	14	15	16		
9	0	1	2	3	4	5	6	7	8	9	10	11	12	13	14	15		
10	0	1	2	3	4	5	6	7	8	9	10	11	12	13	14	15		

H = 6 + D - S



518

AA

P

4

4

Braccetto in zama, collo (P) Piano, per cristallo.
Zamak, crank (P) Straight, for crystal.



CERNIERE A CHIUSURA AUTOMATICA PER MOBILI AD ANGOLO
SELF CLOSING HINGES FOR CORNER CABINET

519

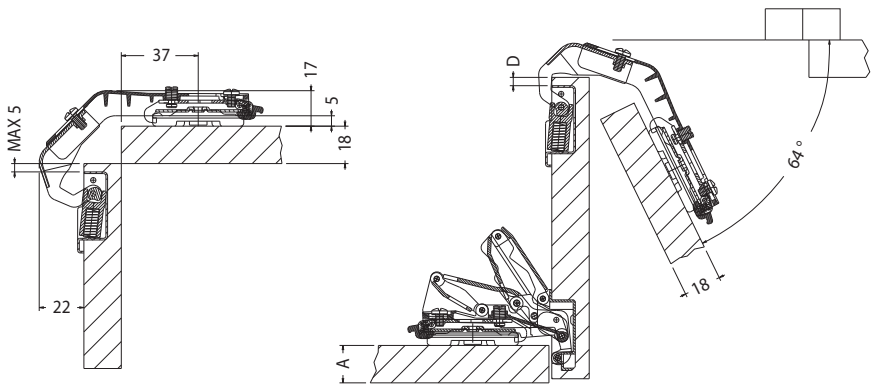


P

4

4

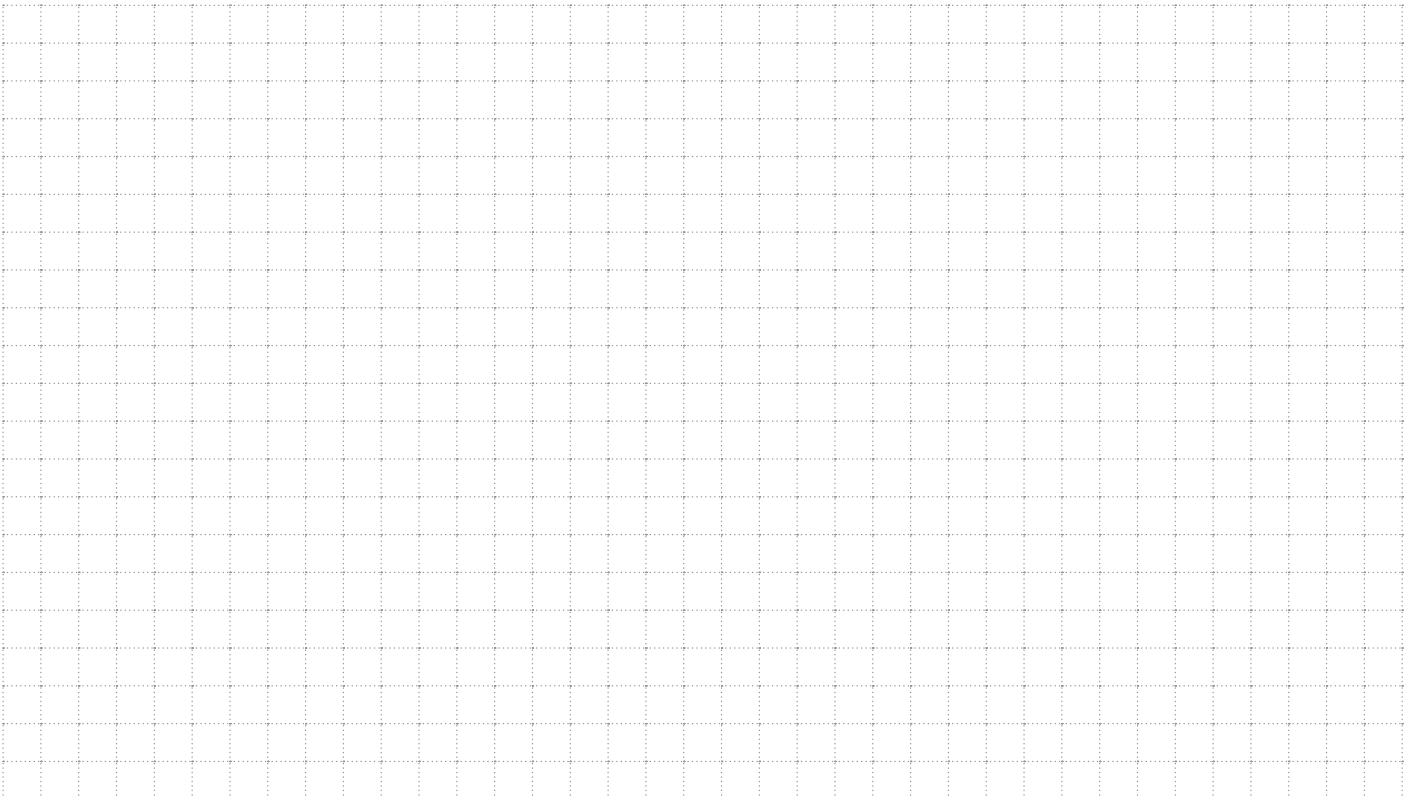
Braccetto in zama, collo (P) Piano.
Zamak, crank (P) Straight.



A = DA 16 mm. a 24 mm.
A = FROM 16 mm. TO 24 mm.

D = 4 mm. - 5 mm. MAX
D = 4 mm. - 5 mm. MAX

Note
Notes



CERNIERE APERTURA 100° PER ANTINE CON PROFILI IN ALLUMINIO

HINGES OPENING 100° FOR DOORS WITH ALUMINIUM FRAMES

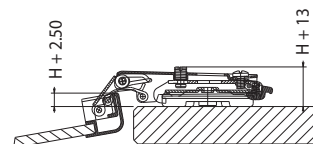
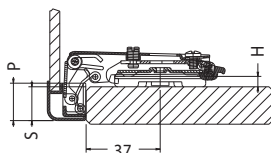
500

12

P

4

4

Braccetto in acciaio, collo (P) Piano.
Steel, crank (P) Straight.**H = 4+P-S**

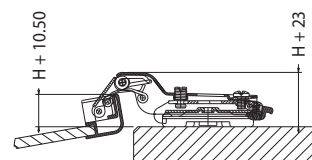
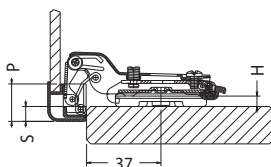
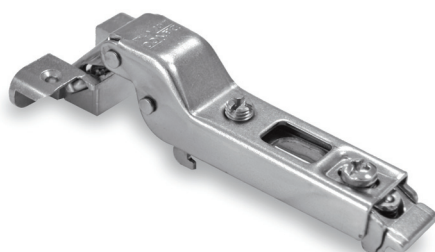
500

12

M

4

4

Braccetto in acciaio, collo (M) Medio.
Steel, crank (M) Medium.**H = -4+P-S**

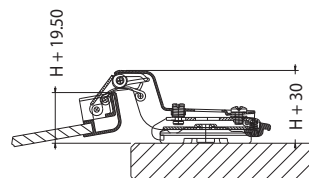
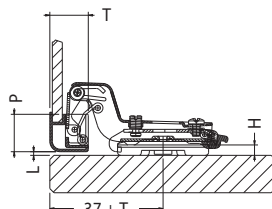
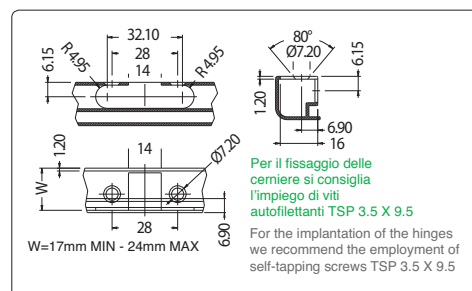
500

12

C

4

4

Braccetto in acciaio, collo (C) Collo alto.
Steel, crank (C) Tall.**H = -15+P+L**

CERNIERE A CHIUSURA AUTOMATICA
SELF CLOSING HINGES

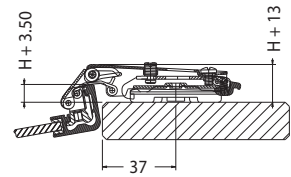
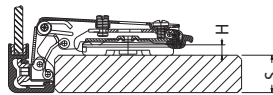
500

25

P

4

4

Braccetto in acciaio, collo (P) Piano.
Steel, crank (P) Straight.**H= 12-S**

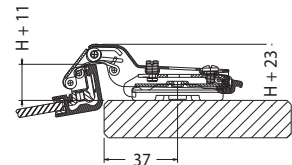
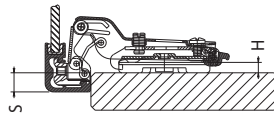
500

25

M

4

4

Braccetto in acciaio, collo (M) Medio.
Steel, crank (M) Medium.**H= 4-S**

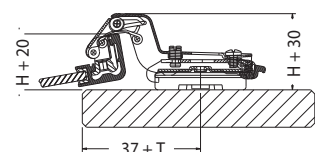
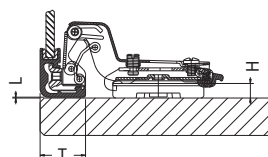
500

25

C

4

4

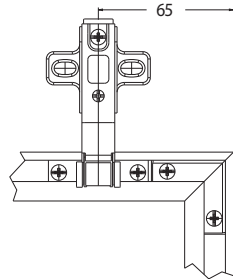
Braccetto in acciaio, collo (C) Collo alto.
Steel, crank (C) Tall.**H= 7+L**

APERTURA 100° PER ANTINE CON PROFILI IN ALLUMINIO

OPENING 100° FOR DOORS WITH ALUMINIUM FRAMES

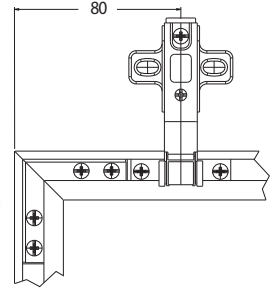
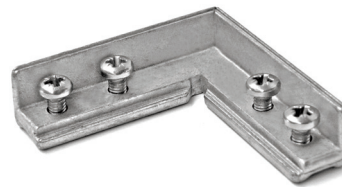
243

Giunzione ad angolo per profili alluminio.
Junction corner for aluminium profile.



245

Giunzione ad angolo per profili alluminio.
Junction corner for aluminium profile.

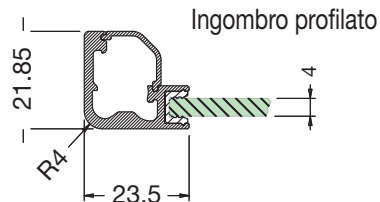


2000

AL

410

Profilo in alluminio lunghezza mm. 4100.
Aluminium profile length mm. 4100.



F 251

Adattatore in zamak per leva.
Adapter in zamak for lever.

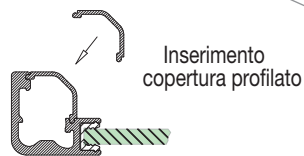


3150

AL

250

Coprifilo in nylon per barra in alluminio da mm. 2500.
Nylon carter for aluminium profile length mm. 2500.

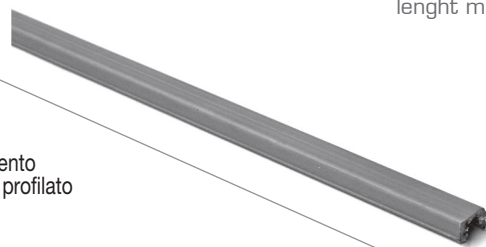


3155

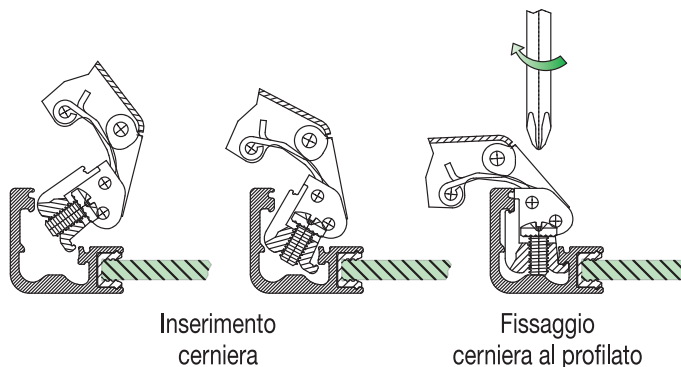
AL

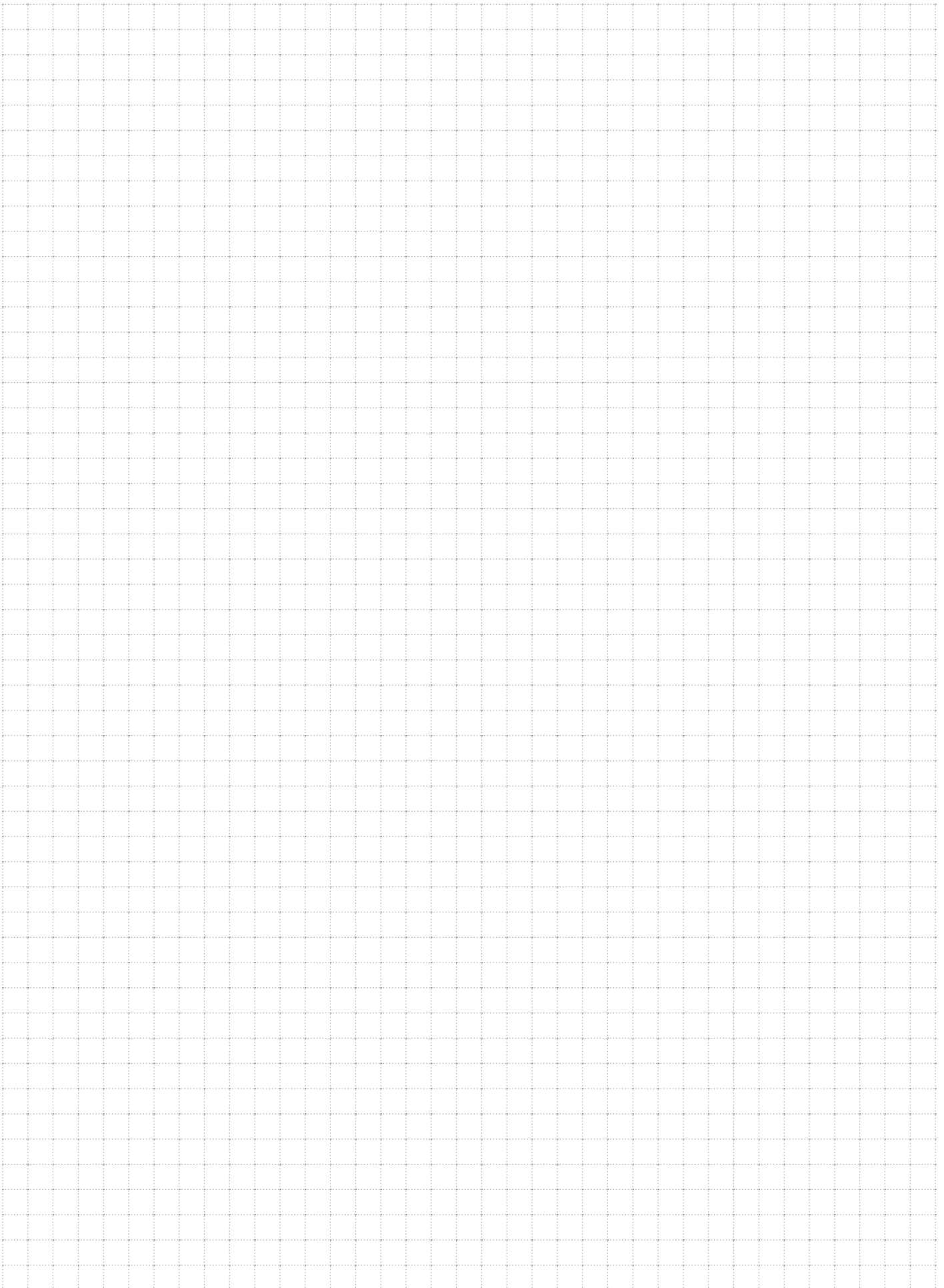
250

Guarnizione in nylon per vetro da mm. 2500.
Nylon carter for glass length mm. 2500.



SCHEMA DI MONTAGGIO
MOUNTING SYSTEM





CASSE CUPS

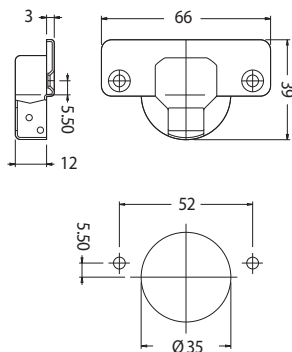
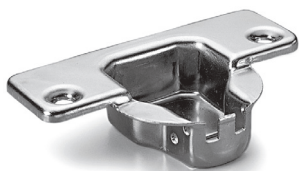
SERIE
500

CASSE DISPONIBILI APERTURA 90° Ø 35

AVAILABLE CUPS OPENING 90° Ø 35

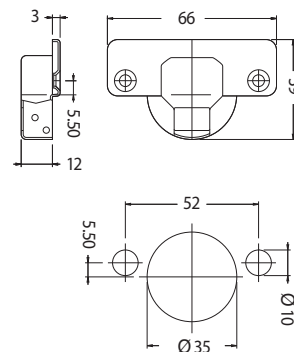
45

Cassa in acciaio; fissaggio a viti autofilettanti (escluse dalla fornitura).
Steel cup; self-cutting screws fastener (not included in supply).



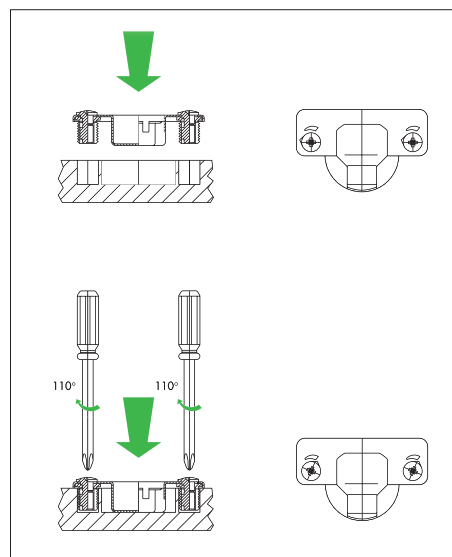
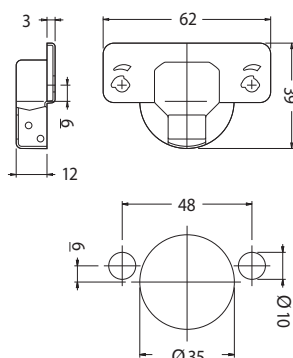
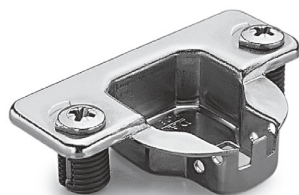
46

Cassa in acciaio; fissaggio a pressione (bussole Ø 10 mm.).
Steel cup; pressurized fastener (Ø 10 mm. dowels).



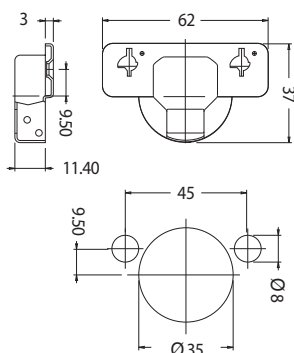
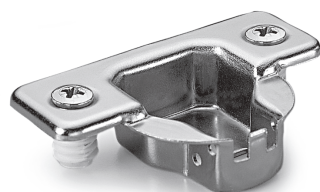
47

Cassa in acciaio; fissaggio a viti pressofuse a camma con bussole Ø 10 mm.
Steel cup; Zamak screws by cam mounted with dowels Ø 10 mm.



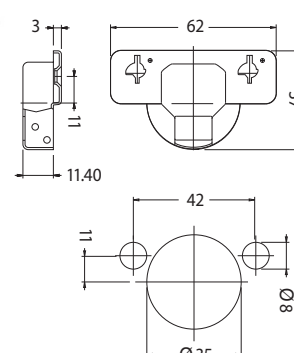
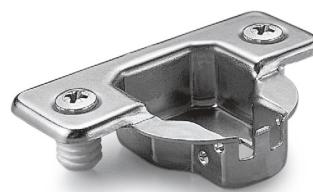
51

Cassa in acciaio; fissaggio a viti pressofuse a camma con bussole Ø 8 mm.
Steel cup; Zamak screws by cam mounted with dowels Ø 8 mm.



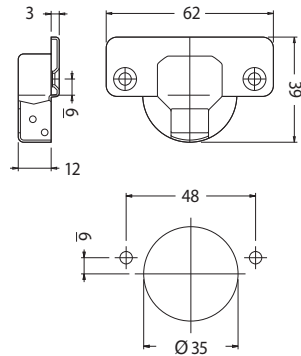
53

Cassa in acciaio; fissaggio a viti pressofuse a camma con bussole Ø 8 mm.
Steel cup; Zamak screws by cam mounted with dowels Ø 8 mm.



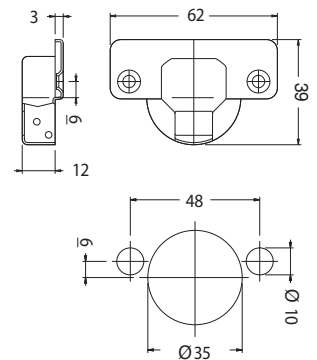
60

Cassa in acciaio; fissaggio a viti autofilettanti (escluse dalla fornitura).
Steel cup; self-cutting screws fastener (not included in supply).



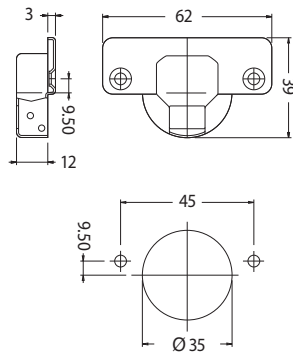
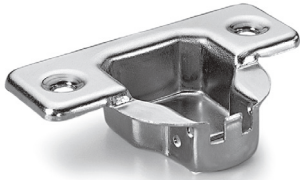
61

Cassa in acciaio; fissaggio a pressione (bussole Ø 10 mm.).
Steel cup; pressurized fastener (Ø 10 mm. dowels).



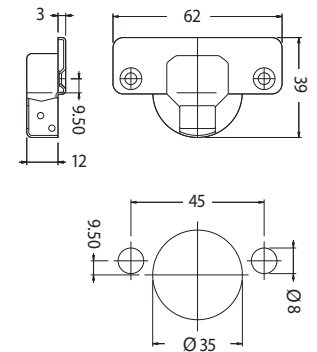
62

Cassa in acciaio; fissaggio a viti autofilettanti (escluse dalla fornitura).
Steel cup; self-cutting screws fastener (not included in supply).



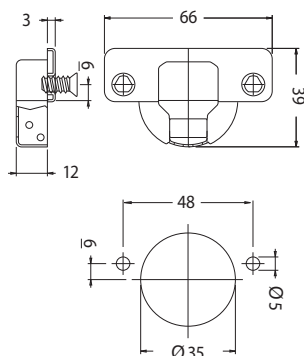
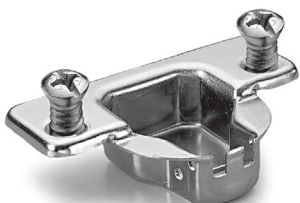
63

Cassa in acciaio; fissaggio a pressione (bussole Ø 8 mm.).
Steel cup; pressurized fastener (Ø 8 mm. dowels).



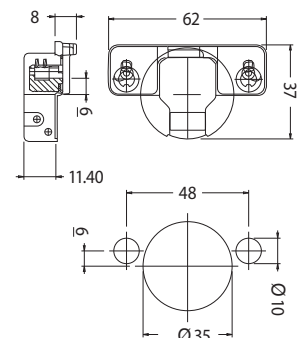
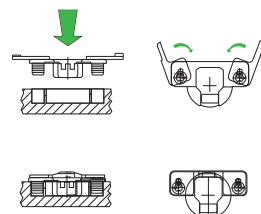
89

Cassa in acciaio; fissaggio a viti Euro.
Steel cup; Euro screws fastener.



39

Cassa in acciaio; fissaggio a camma senza utensili.
Steel cup; fixing by cam screws without tools.

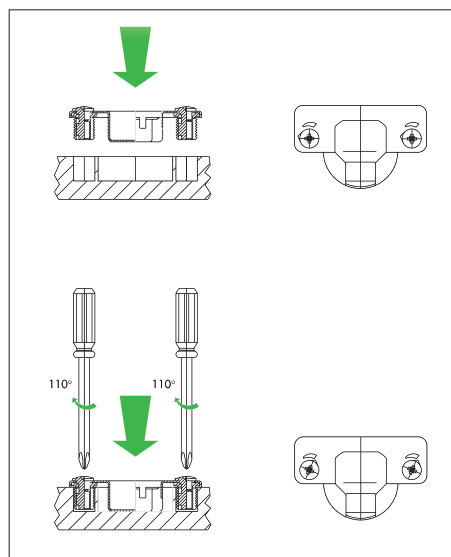
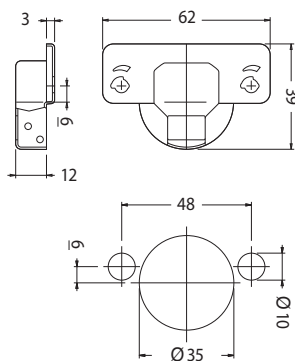
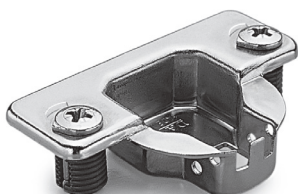


CASSE DISPONIBILI APERTURA 110° ∅ 35

AVAILABLE CUPS OPENING 110° ∅ 35

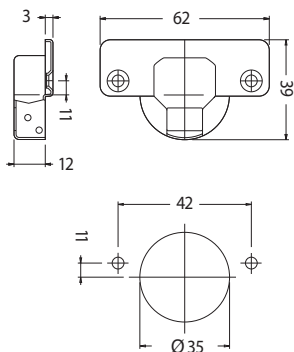
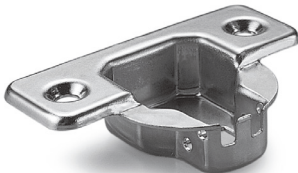
44

Cassa in acciaio; fissaggio a viti pressofuse a camma con bussole $\varnothing 10$ mm.
Steel cup; Zamak screws by cam mounted with dowels $\varnothing 10$ mm.



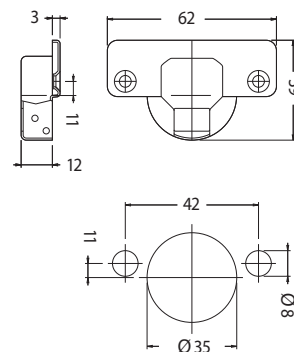
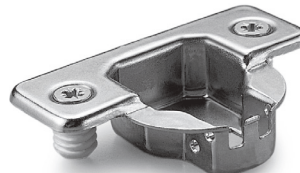
48

Cassa in acciaio; fissaggio a viti autofilettanti (escluse dalla fornitura).
Steel cup; self-cutting screws fastener (not included in supply).



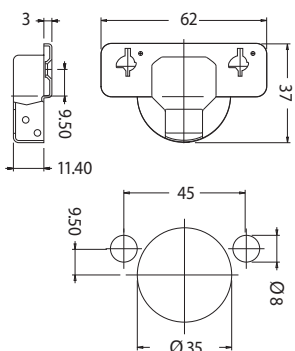
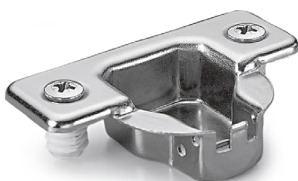
49

Cassa in acciaio; fissaggio a pressione (bussole $\varnothing 8$ mm.).
Steel cup; pressurized fastener ($\varnothing 8$ mm. dowels).



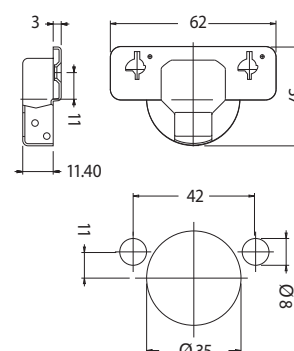
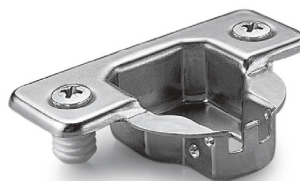
52

Cassa in acciaio; fissaggio a viti pressofuse a camma con bussole $\varnothing 8$ mm.
Steel cup; Zamak screws by cam mounted with dowels $\varnothing 8$ mm.



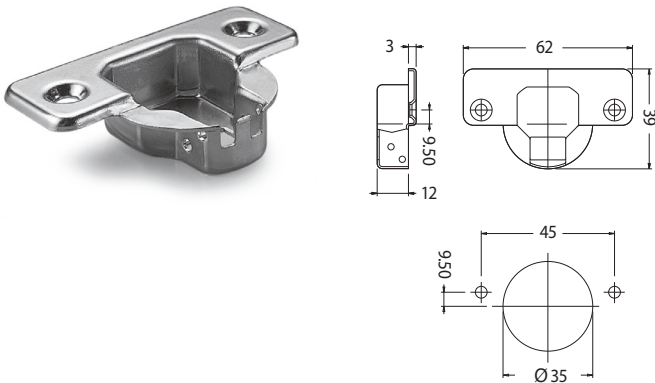
54

Cassa in acciaio; fissaggio a viti pressofuse a camma con bussole $\varnothing 8$ mm.
Steel cup; Zamak screws by cam mounted with dowels $\varnothing 8$ mm.



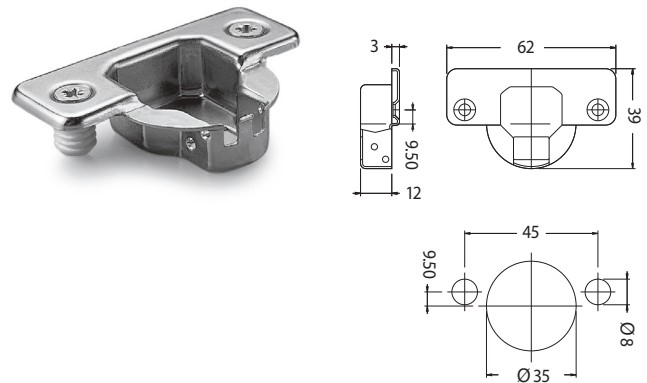
65

Cassa in acciaio; fissaggio a viti autofilettanti (escluse dalla fornitura).
Steel cup; self-cutting screws fastener (not included in supply).



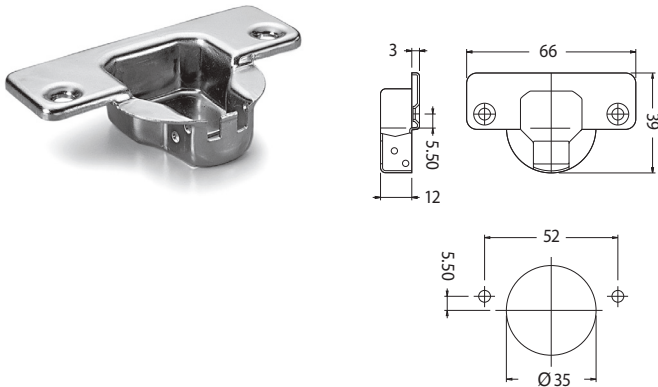
66

Cassa in acciaio; fissaggio a pressione (bussole Ø 8 mm.).
Steel cup; pressurized fastener (Ø 8 mm. dowels).



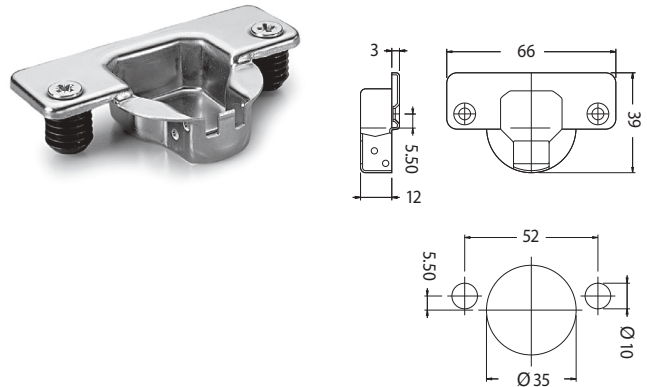
68

Cassa in acciaio; fissaggio a viti autofilettanti (escluse dalla fornitura).
Steel cup; self-cutting screws fastener (not included in supply).



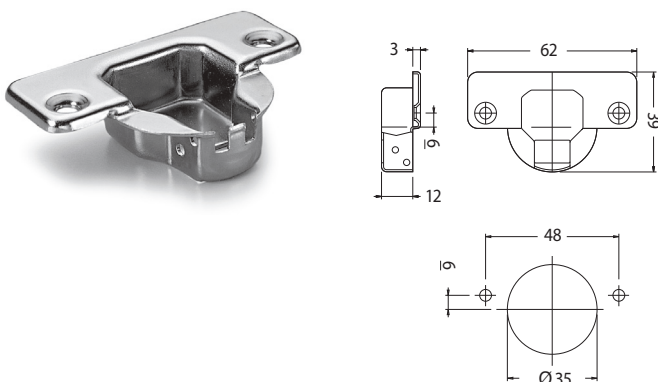
69

Cassa in acciaio; fissaggio a pressione (bussole Ø 10 mm.).
Steel cup; pressurized fastener (Ø 10 mm. dowels).



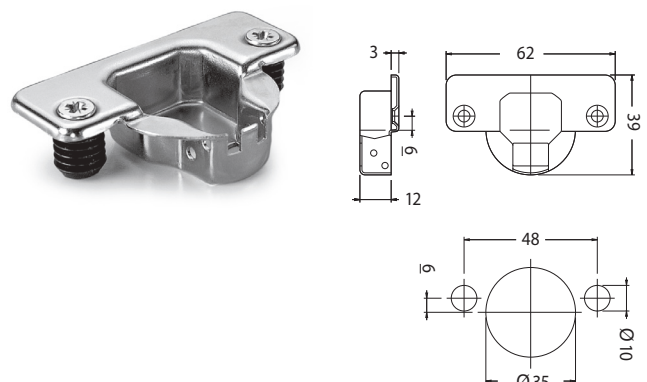
70

Cassa in acciaio; fissaggio a viti autofilettanti (escluse dalla fornitura).
Steel cup; self-cutting screws fastener (not included in supply).



71

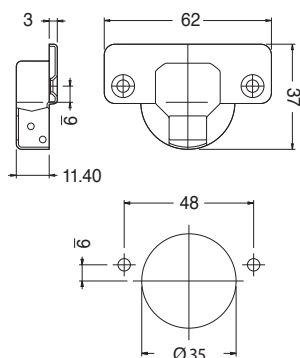
Cassa in acciaio; fissaggio a pressione (bussole Ø 10 mm.).
Steel cup; pressurized fastener (Ø 10 mm. dowels).



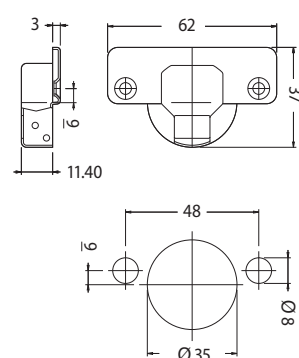
CASSE DISPONIBILI APERTURA 110° ∅ 35

AVAILABLE CUPS OPENING 110° ∅ 35

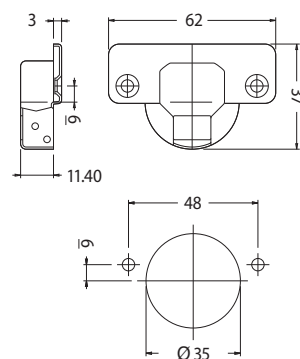
72

Cassa in acciaio; fissaggio a viti autofilettanti
(escluse dalla fornitura).Steel cup; self-cutting screws fastener
(not included in supply).

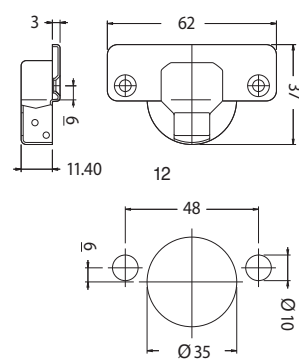
73

Cassa in acciaio; fissaggio a pressione
(bussole ∅ 8 mm.).Steel cup; pressurized fastener
(∅ 8 mm. dowels).

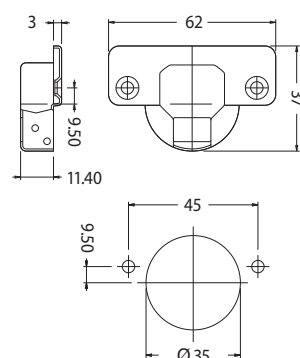
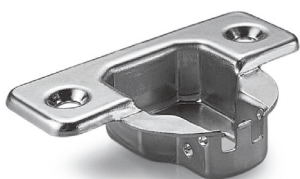
80

Cassa in acciaio; fissaggio a viti autofilettanti
(escluse dalla fornitura).Steel cup; self-cutting screws fastener
(not included in supply).

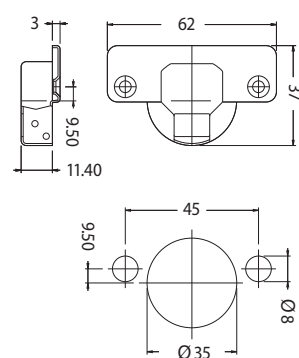
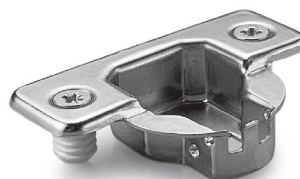
81

Cassa in acciaio; fissaggio a pressione
(bussole ∅ 10 mm.).Steel cup; pressurized fastener
(∅ 10 mm. dowels).

85

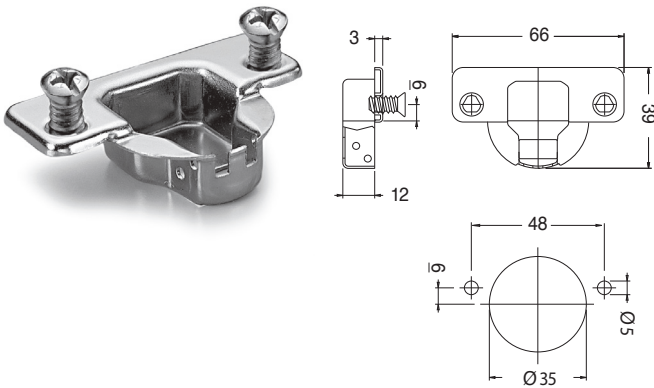
Cassa in acciaio; fissaggio a viti autofilettanti
(escluse dalla fornitura).Steel cup; self-cutting screws fastener
(not included in supply).

86

Cassa in acciaio; fissaggio a pressione
(bussole ∅ 8 mm.).Steel cup; pressurized fastener
(∅ 8 mm. dowels).

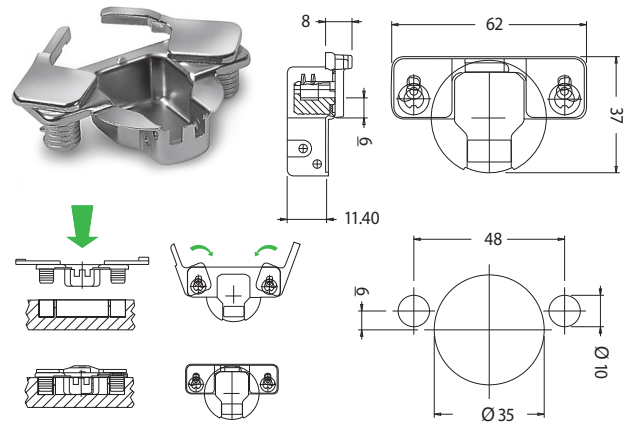
84

Cassa in acciaio; fissaggio a viti Euro.
Steel cup; Euro screws fastener.



50

Cassa in acciaio; fissaggio a camma senza utensili.
Steel cup; fixing by cam screws without tools.

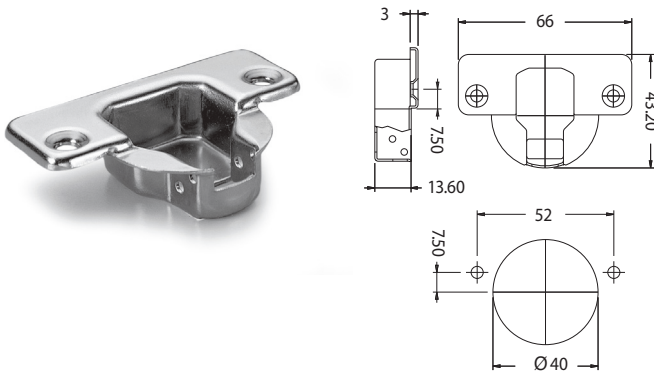


CASSE DISPONIBILI APERTURA 93° Ø 40

AVAILABLE CUPS OPENING 93° Ø 40

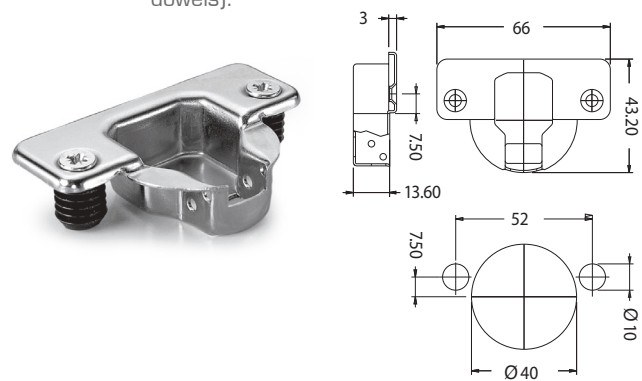
90

Cassa in acciaio; fissaggio a viti autofilettanti
(escluse dalla fornitura).
Steel cup; self-cutting screws fastener (not included in supply).



91

Cassa in acciaio; fissaggio a pressione
(bussole Ø 10 mm.).
Steel cup; pressurized fastener (Ø 10 mm. dowels).



Note
Notes

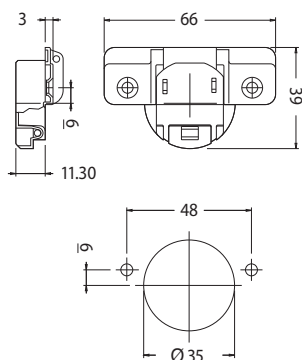
A large grid area for providing notes or additional information.

CASSE DISPONIBILI APERTURA 165° ∅ 35

AVAILABLE CUPS OPENING 165° ∅ 35

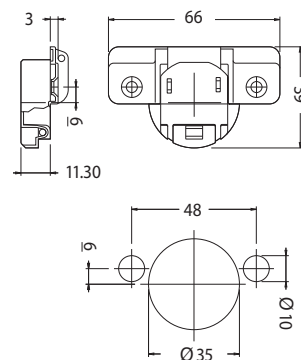
01

Cassa in zama; fissaggio a viti autofilettanti
(escluse dalla fornitura).
Zamak cup; self-cutting screws fastener (not
included in supply).



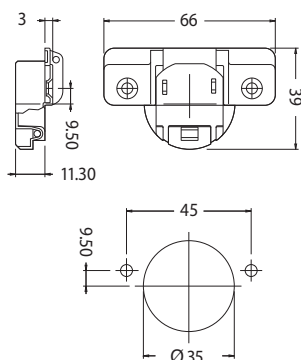
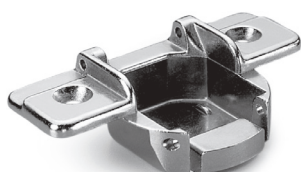
03

Cassa in zama; fissaggio a pressione
(bussole $\varnothing 10$ mm.).
Zamak cup; pressurized fastener
($\varnothing 10$ mm. dowels).



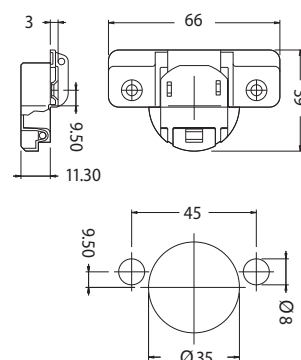
04

Cassa in zama; fissaggio a viti autofilettanti
(escluse dalla fornitura).
Zamak cup; self-cutting screws fastener
(not included in supply).



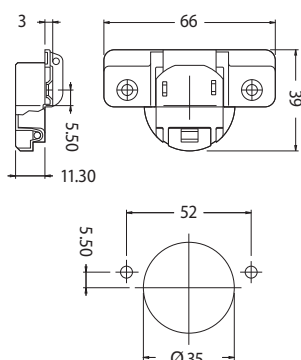
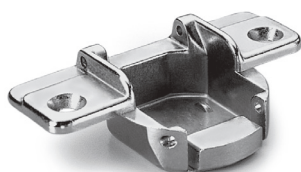
05

Cassa in zama; fissaggio a pressione
(bussole $\varnothing 8$ mm.).
Zamak cup; pressurized fastener
($\varnothing 8$ mm. dowels).



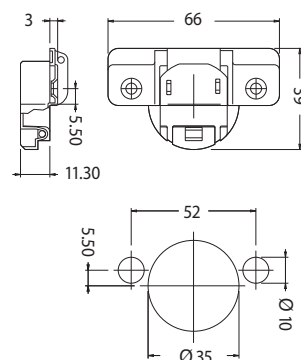
06

Cassa in zama; fissaggio a viti autofilettanti
(escluse dalla fornitura).
Zamak cup; self-cutting screws fastener
(not included in supply).



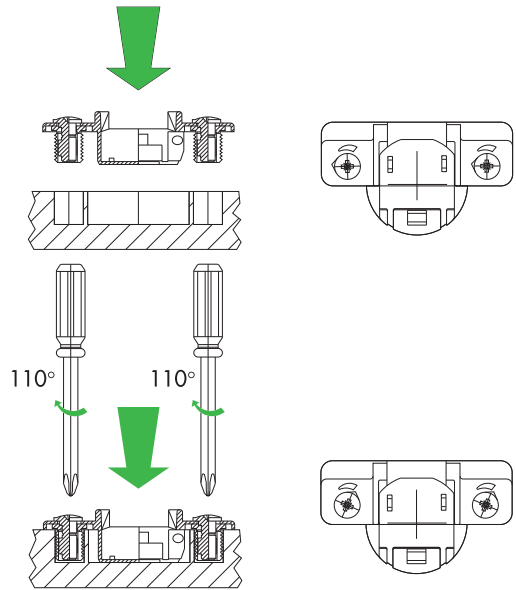
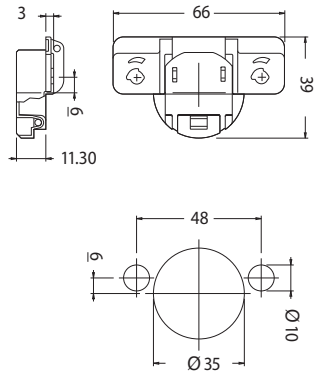
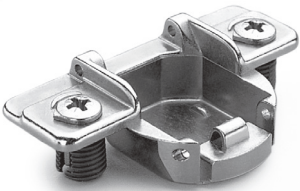
07

Cassa in zama; fissaggio a pressione
(bussole $\varnothing 10$ mm.).
Zamak cup; pressurized fastener
($\varnothing 10$ mm. dowels).



02

Cassa in zama; fissaggio a viti pressofuse a camma con bussole $\varnothing 10$ mm.
Zamak cup; Zamak screws by cam mounted with dowels $\varnothing 10$ mm.



Note
Notes

A large grid area for taking notes, consisting of a grid of small squares.

casse
cups

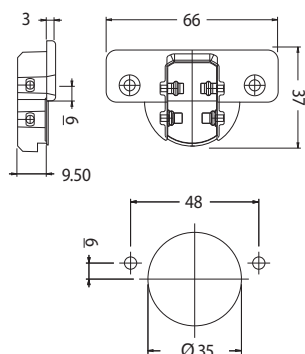
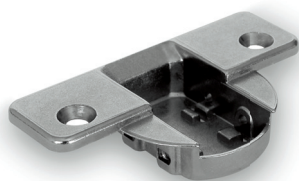
CASSE DISPONIBILI APERTURA 110° ∅ 35

518

AVAILABLE CUPS OPENING 110° ∅ 35

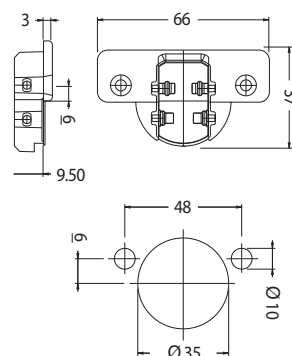
AN

Cassa in zama; fissaggio a viti autofilettanti (escluse dalla fornitura).
Zamak cup; self-cutting screws fastener (not included in supply).



AP

Cassa in zama; fissaggio a pressione (bussole ∅ 10 mm.).
Zamak cup; pressurized fastener (∅ 10 mm. dowels).



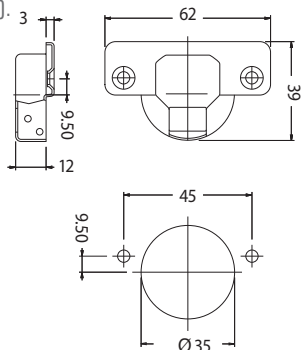
CASSE DISPONIBILI PER MOBILI AD ANGOLO ∅ 35

519

AVAILABLE CUPS FOR CORNER CABINETS ∅ 35

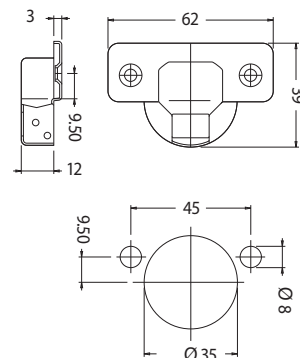
82

Cassa in acciaio; fissaggio a viti autofilettanti (escluse dalla fornitura).
Steel cup; self-cutting screws fastener (not included in supply).



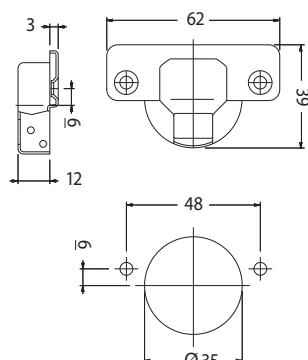
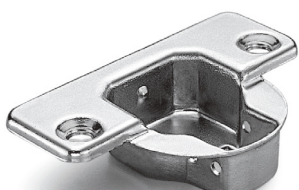
83

Cassa in acciaio; fissaggio a pressione (bussole ∅ 8 mm.).
Steel cup; pressurized fastener (∅ 8 mm. dowels).



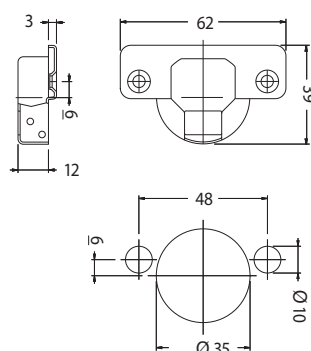
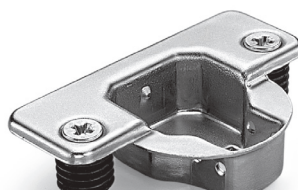
87

Cassa in acciaio; fissaggio a viti autofilettanti (escluse dalla fornitura).
Steel cup; self-cutting screws fastener (not included in supply).



88

Cassa in acciaio; fissaggio a pressione (bussole ∅ 10 mm.).
Steel cup; pressurized fastener (∅ 10 mm. dowels).



BASETTE MOUNTING PLATES

SERIE
500

BASETTE DISPONIBILI

AVAILABLE MOUNTING PLATES

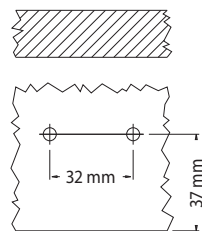
B 971 AR

SPESSORE THICKNESS
mm. 5

Basetta in acciaio reversibile; regolazione verticale mediante camma; interasse 32 mm., modulo 37.
Steel reversible mounting plate; vertical setting by cam; wheelbase 32 mm., modulus 37.



reversibile



B 971 ER

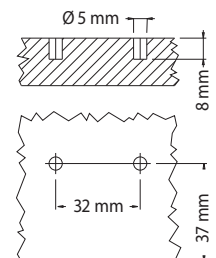
SPESSORE THICKNESS
mm. 5

Basetta in acciaio reversibile; fissaggio a viti Euro (escluse dalla fornitura); regolazione verticale mediante camma; interasse 32 mm., modulo 37.

Steel reversible mounting plate; Euro screws fastener (not included in supply); vertical setting by cam; wheelbase 32 mm., modulus 37.



reversibile



B 971 ER M

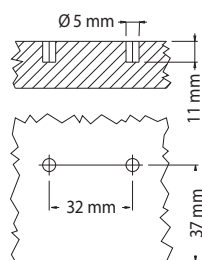
SPESSORE THICKNESS
mm. 5

Basetta in acciaio reversibile; fissaggio a viti Euro 6,3 x 13; regolazione verticale mediante camma; interasse 32 mm., modulo 37.

Steel reversible mounting plate; Euro screws fastener 6,3 x 13; vertical setting by cam; wheelbase 32 mm., modulus 37.



reversibile



B 971 P10

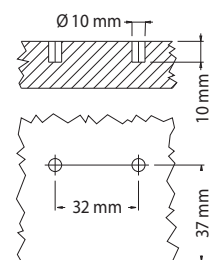
SPESSORE THICKNESS
mm. 5

Basetta in acciaio reversibile; fissaggio a pressione (bussole Ø 10 mm.); regolazione verticale mediante camma; interasse 32 mm., modulo 37.

Steel reversible mounting plate; pressurized fastener (Ø 10 mm. dowels); vertical setting by cam; wheelbase 32 mm., modulus 37.



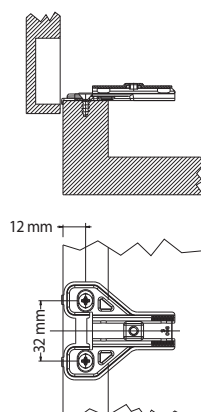
reversibile



B 960 AR

SPESSORE THICKNESS
mm. 5

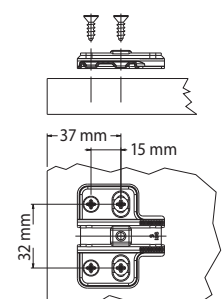
Basetta in acciaio.
Steel mounting plate.



B 961 AR

SPESSORE THICKNESS
mm. 5

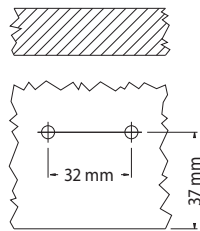
Basetta in acciaio.
Steel mounting plate.



B 950 AR

SPESSORE THICKNESS
mm. 5 - 7

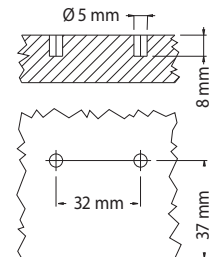
Basetta in zama; doppia regolazione mediante camma frontale e verticale; interasse 32 mm., modulo 37.
Zamak mounting plate; double setting by cam, frontal and vertical adjustment; wheelbase 32 mm., modulus 37.



B 950 ER

SPESSORE THICKNESS
mm. 5 - 7

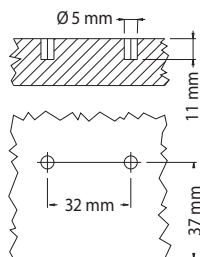
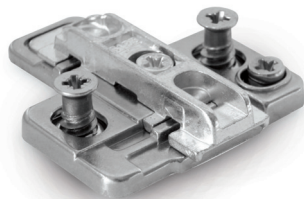
Basetta in zama; fissaggio a viti Euro (escluse dalla fornitura); doppia regolazione mediante camma frontale e verticale; interasse 32 mm., modulo 37.
Zamak mounting plate; Euro screws fastener (not included in supply); double setting by cam, frontal and vertical adjustment; wheelbase 32 mm., modulus 37.



B 950 ER M

SPESSORE THICKNESS
mm. 5 - 7

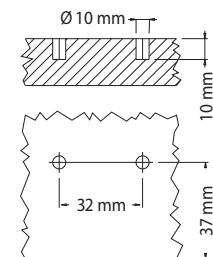
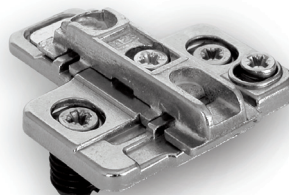
Basetta in zama; fissaggio a viti Euro 6,3 x 13; doppia regolazione mediante camma frontale e verticale; interasse 32 mm., modulo 37.
Zamak mounting plate; Euro screws fastener 6,3 x 13; double setting by cam, frontal and vertical adjustment; wheelbase 32 mm., modulus 37.



B 950 P10

SPESSORE THICKNESS
mm. 5 - 7

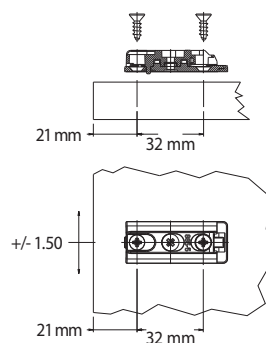
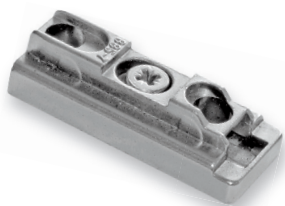
Basetta in zama; fissaggio a pressione (bussole Ø 10 mm.); doppia regolazione mediante camma frontale e verticale; interasse 32 mm., modulo 37.
Zamak mounting plate; pressurized fastener (Ø 10 mm. dowels); double setting by cam, frontal and vertical adjustment; wheelbase 32 mm., modulus 37.



B 885 AR

SPESSORE THICKNESS
mm. 5 - 7

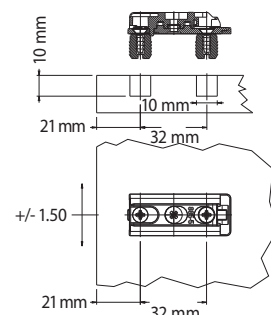
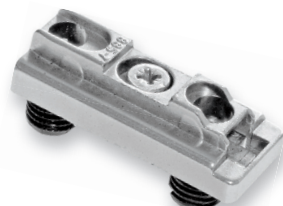
Basetta in zama. Regolabile.
Zamak mounting plate. Adjustable.



B 885 P10

SPESSORE THICKNESS
mm. 5 - 7

Basetta in zama; regolabile con bussole Ø 10 mm.
Zamak mounting plate; adjustable with dowels Ø 10 mm.

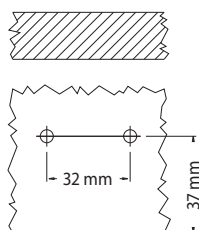


BASETTE DISPONIBILI

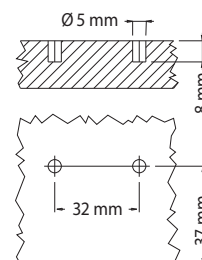
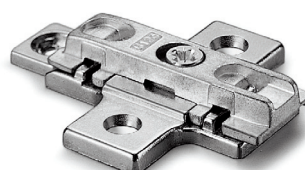
AVAILABLE MOUNTING PLATES

B 987 ARSPESSORE THICKNESS
mm. 5 - 7

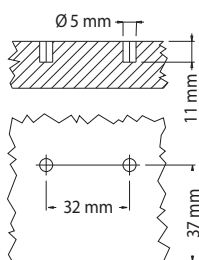
Basetta in zama; regolazione verticale mediante camma; interasse 32 mm., modulo 37.
Zamak mounting plate; vertical setting by cam; wheelbase 32 mm., modulus 37.

**B 987 ER**SPESSORE THICKNESS
mm. 5 - 7

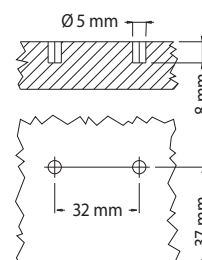
Basetta in zama; fissaggio a viti Euro (escluse dalla fornitura); regolazione verticale mediante camma; interasse 32 mm., modulo 37.
Zamak mounting plate; Euro screws fastener (not included in supply); vertical setting by cam; wheelbase 32 mm., modulus 37.

**B 987 ER L**SPESSORE THICKNESS
mm. 5 - 7

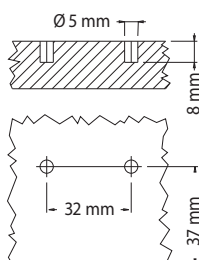
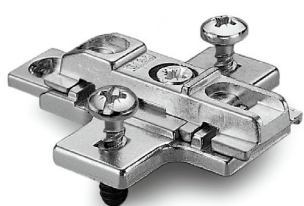
Basetta in zama; fissaggio a viti Euro 6,3 x 14; regolazione verticale mediante camma; interasse 32 mm., modulo 37.
Zamak mounting plate; Euro screws fastener 6,3 x 14; vertical setting by cam; wheelbase 32 mm., modulus 37.

**B 987 ER C**SPESSORE THICKNESS
mm. 5 - 7

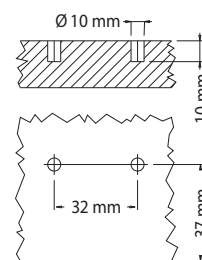
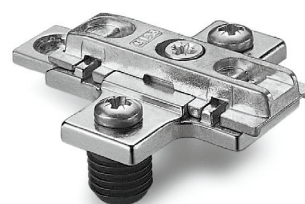
Basetta in zama; fissaggio a viti Euro 6,3 x 10,5; regolazione verticale mediante camma; interasse 32 mm., modulo 37.
Zamak mounting plate; Euro screws fastener 6,3 x 10,5; vertical setting by cam; wheelbase 32 mm., modulus 37.

**B 987 P5 I**SPESSORE THICKNESS
mm. 5 - 7

Basetta in zama; fissaggio bussole Ø 5 mm., regolazione verticale mediante camma; interasse 32 mm., modulo 37.
Zamak mounting plate; Ø 5 mm. dowels fastener, vertical setting by cam; wheelbase 32 mm., modulus 37.

**B 987 P10**SPESSORE THICKNESS
mm. 5 - 7

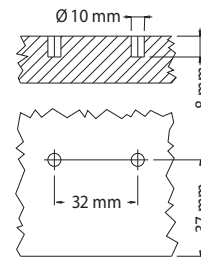
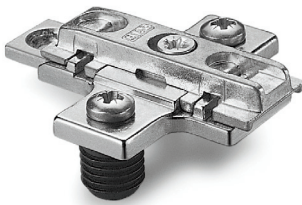
Basetta in zama; fissaggio a pressione (bussole Ø 10 mm.); regolazione verticale mediante camma; interasse 32 mm., modulo 37.
Zamak mounting plate; pressurized fastener (Ø 10 mm. dowels); vertical setting by cam; wheelbase 32 mm., modulus 37.



B 987 P10 B

SPESSORE THICKNESS
mm. 5 - 7

Basetta in zama; fissaggio a pressione (bussole \varnothing 10 mm.);
regolazione verticale mediante camma; interasse 32 mm., modulo 37.
Zamak mounting plate; pressurized fastener (\varnothing 10 mm. dowels);
vertical setting by cam; wheelbase 32 mm., modulus 37.



Note
Notes

A large grid area for notes, consisting of a grid of small squares.



basette
mounting plates

BASETTE DISPONIBILI REVERSIBILI

AVAILABLE MOUNTING PLATES REVERSIBLES

B 997 AR

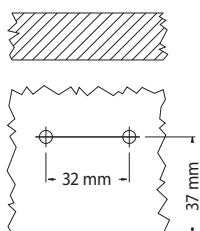
SPESSORE THICKNESS
mm. 4 - 5 - 7

Basetta in acciaio reversibile; regolazione verticale; interasse 32 mm., modulo 37.

Steel reversible mounting plate; vertical setting; wheelbase 32 mm., modulus 37.



reversibile



B 997 ER

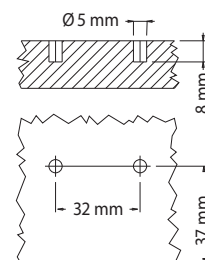
SPESSORE THICKNESS
mm. 4 - 5 - 7

Basetta in acciaio reversibile; fissaggio a viti Euro (escluse dalla fornitura); regolazione verticale; interasse 32 mm., modulo 37.

Steel reversible mounting plate; Euro screws fastener (not included in supply); vertical setting; wheelbase 32 mm., modulus 37.



reversibile

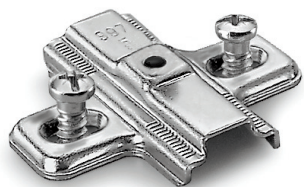


B 997 ER L

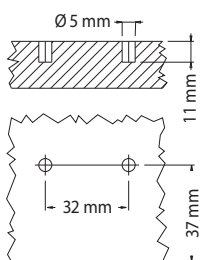
SPESSORE THICKNESS
mm. 4 - 5 - 7

Basetta in acciaio reversibile; fissaggio a viti Euro 6,3 x 14; regolazione verticale; interasse 32 mm., modulo 37.

Steel reversible mounting plate; Euro screws fastener 6,3 x 14; vertical setting; wheelbase 32 mm., modulus 37.



reversibile

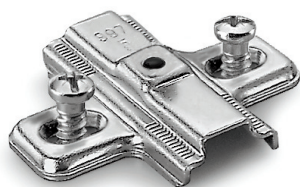


B 997 ER C

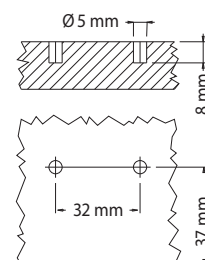
SPESSORE THICKNESS
mm. 4 - 5 - 7

Basetta in acciaio reversibile; fissaggio a viti Euro 6,3 x 10,5; regolazione verticale; interasse 32 mm., modulo 37.

Steel reversible mounting plate; Euro screws fastener 6,3 x 10,5; vertical setting; wheelbase 32 mm., modulus 37.



reversibile

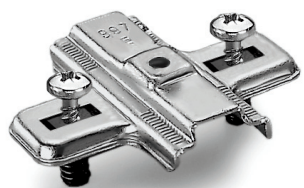


B 997 P5 I

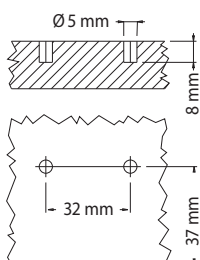
SPESSORE THICKNESS
mm. 4 - 5 - 7

Basetta in acciaio reversibile; fissaggio a bussole \varnothing 5 mm. regolazione verticale; interasse 32 mm., modulo 37.

Steel reversible mounting plate; \varnothing 5 mm. dowels fastener; vertical setting; wheelbase 32 mm., modulus 37.



reversibile



B 997 P10

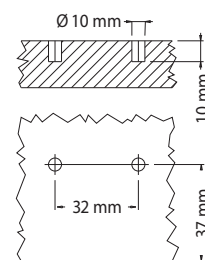
SPESSORE THICKNESS
mm. 4 - 5 - 7

Basetta in acciaio reversibile; fissaggio a pressione (bussole \varnothing 10 mm.); regolazione verticale; interasse 32 mm., modulo 37.

Steel reversible mounting plate; pressurized fastener (\varnothing 10 mm. dowels); vertical setting; wheelbase 32 mm., modulus 37.



reversibile



PLACCHETTE COPRIVITE

COVER-CAPS

P 001 - 1

Placchetta coprivite in plastica nera.
Plastic cover-cap black colour.

**P 001 - 1S**

Placchetta coprivite in plastica nera
con logo personalizzato a richiesta.
Plastic cover-cap black colour with
customer logo printed if required.

**P 001 - 3**

Placchetta coprivite in plastica
bianca.
Plastic cover-cap white colour.

**P 001 - 3S**

Placchetta coprivite in plastica bianca
con logo personalizzato a richiesta.
Plastic cover-cap white colour with
customer logo printed if required.

**P 050 - 4**

Placchetta coprivite in acciaio.
Steel cover-cap.

**P 050 - 4S**

Placchetta coprivite in acciaio con
logo personalizzato a richiesta.
Steel cover-cap with customer logo
printed if required.



Le immagini utilizzate in questo esempio d'ordine sono indicative e potrebbero non corrispondere a quelle del presente catalogo.




The images used in this example are indicative and may not correspond to those in this catalog.

	SERIE SERIE		SPESSORE BASETTA IN MM MOUNTING PLATE THICKNESS IN MM
	CASSA CUP		ALTEZZA BRACCETTO CRANK HEIGHT
	BRACCETTO ARM		FINITURA CASSA CUP FINISHING
	BASETTA MOUNTING PLATE		FINITURA BRACCETTO ARM FINISHING
	NUMERO RIFERIMENTO CASSA REFERENCE CUP NUMBER		FINITURA BASETTA MOUNTING PLATE FINISHING

 altezza braccetto
crank height

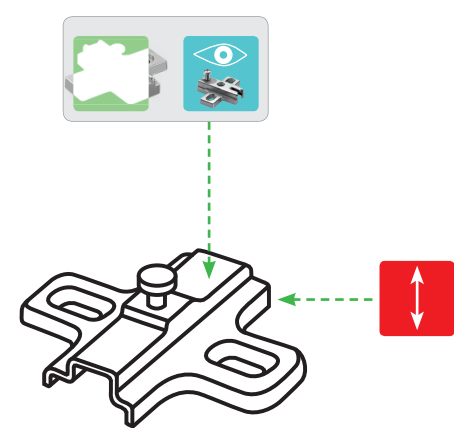
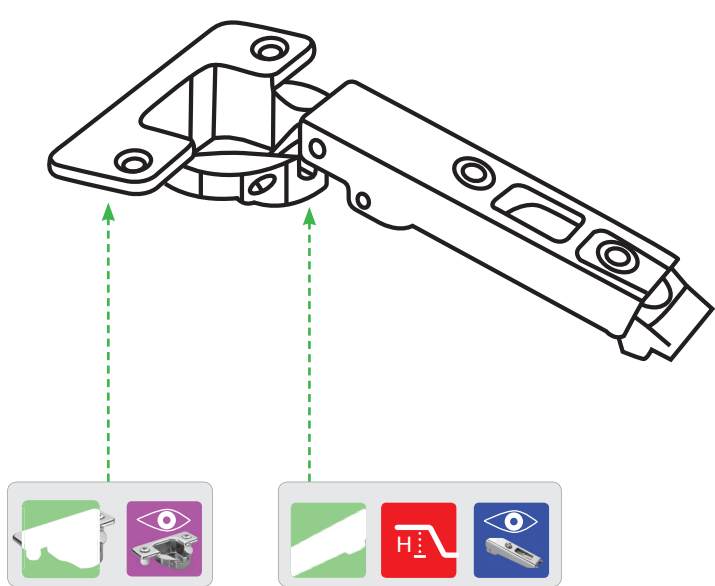
P = collo piano - straight crank mm. 0
M = collo medio - medium crank mm. 8
C = collo alto - tall crank mm. 17
A = super collo - supercrank mm. 22

FINITURA
FINISHING

NICHELATO - NIKEL PLATED 4
 ZINCATO - GALVANIZED 9

	VITE INSERITA INSERTED SCREW		SENZA MOLLA WITHOUT SPRING		SPINTA PUSH
---	---------------------------------	---	-------------------------------	---	----------------

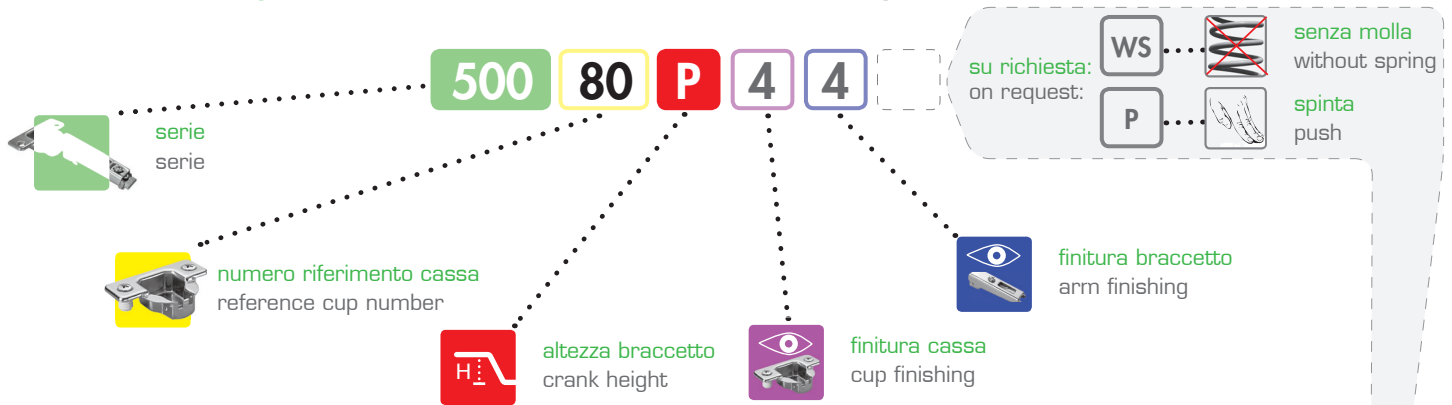


ESEMPIO D'ORDINE

EXAMPLE OF ORDER

Per una corretta ordinazione ed un'esatta determinazione del codice seguire le sottoindicate modalità, con la seguente successione:

For a proper order and an exact interpretation of the code, please follow the undermentioned indications in the following order:



ESEMPIO DI ORDINE CERNIERE - ORDERING EXAMPLE OF HINGES

	CODICE SERIE SERIE CODE	→	500
	NUMERO RIFERIMENTO CASSA REFERENCE CUP NUMBER	→	80
	ALTEZZA BRACCETTO CRANK HEIGHT	→	P
	FINITURA CASSA CUP FINISHING	→	4
	FINITURA BRACCETTO ARM FINISHING	→	4
	SENZA MOLLA WITHOUT SPRING	→	WS
	SPINTA PUSH	→	P

Ordinare il seguente codice:
Order the following code:

500 80 P 4 4

Si avrà quindi una cerniera con cassa e braccetto in acciaio nichelato, collo piano.
You will therefore have a hinge with steel, nickel plated cup and arm, straight crank.

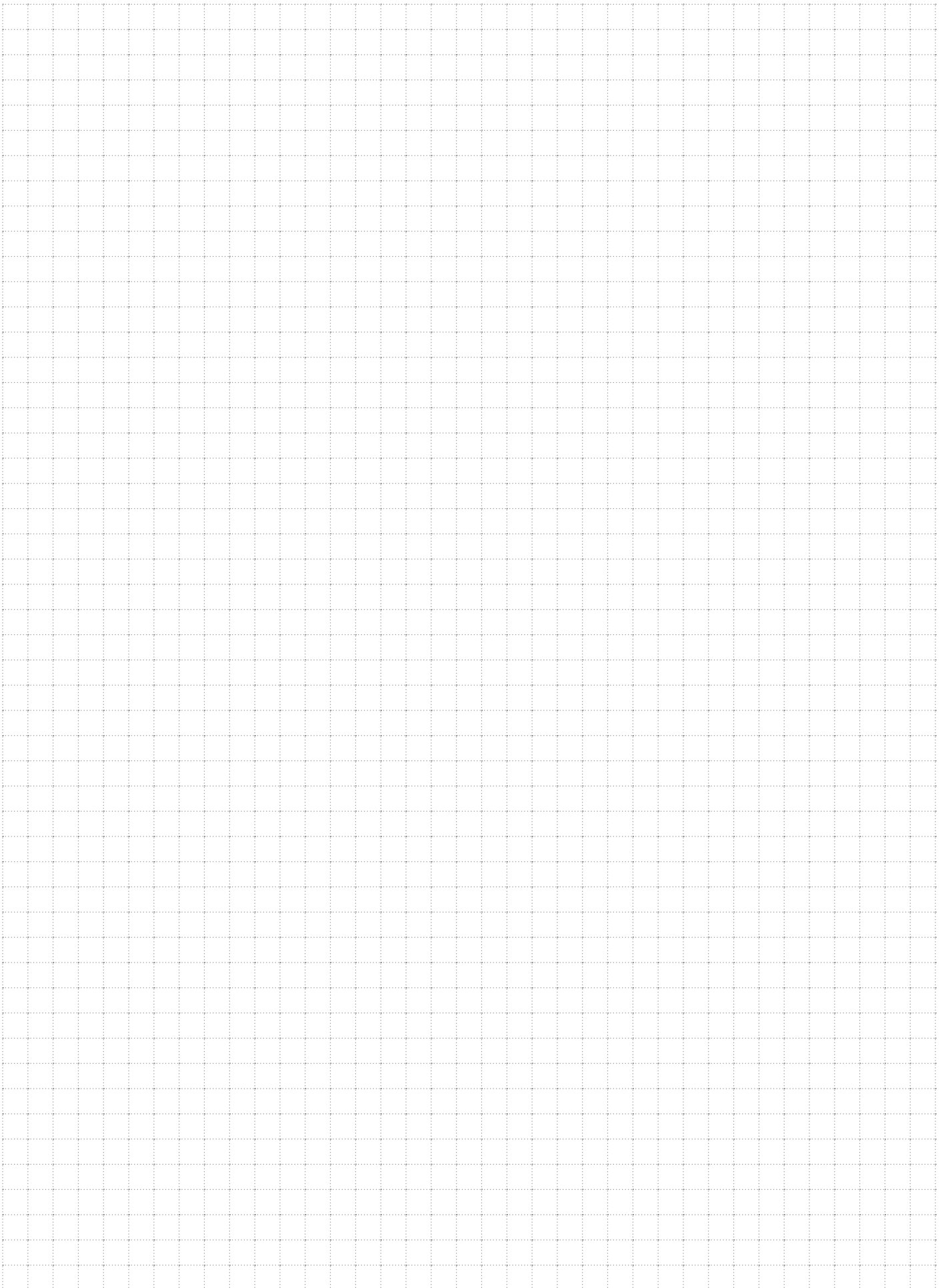
ESEMPIO DI ORDINE BASETTE - ORDERING EXAMPLE OF MOUNTING PLATES

	CODICE BASETTA MOUNTING PLATE CODE	→	B 997 AR
	SPESORE THICKNESS	→	5
	FINITURA BASETTA MOUNTING PLATE FINISHING	→	4

Ordinare il seguente codice:
Order the following code:

B 997 AR 5 4

Si avrà quindi una basetta cod. B 997 AR con spessore 5 mm., nichelato.
You will therefore have a mounting plate code B 997 AR mm. 5 thickness, nickel plated.

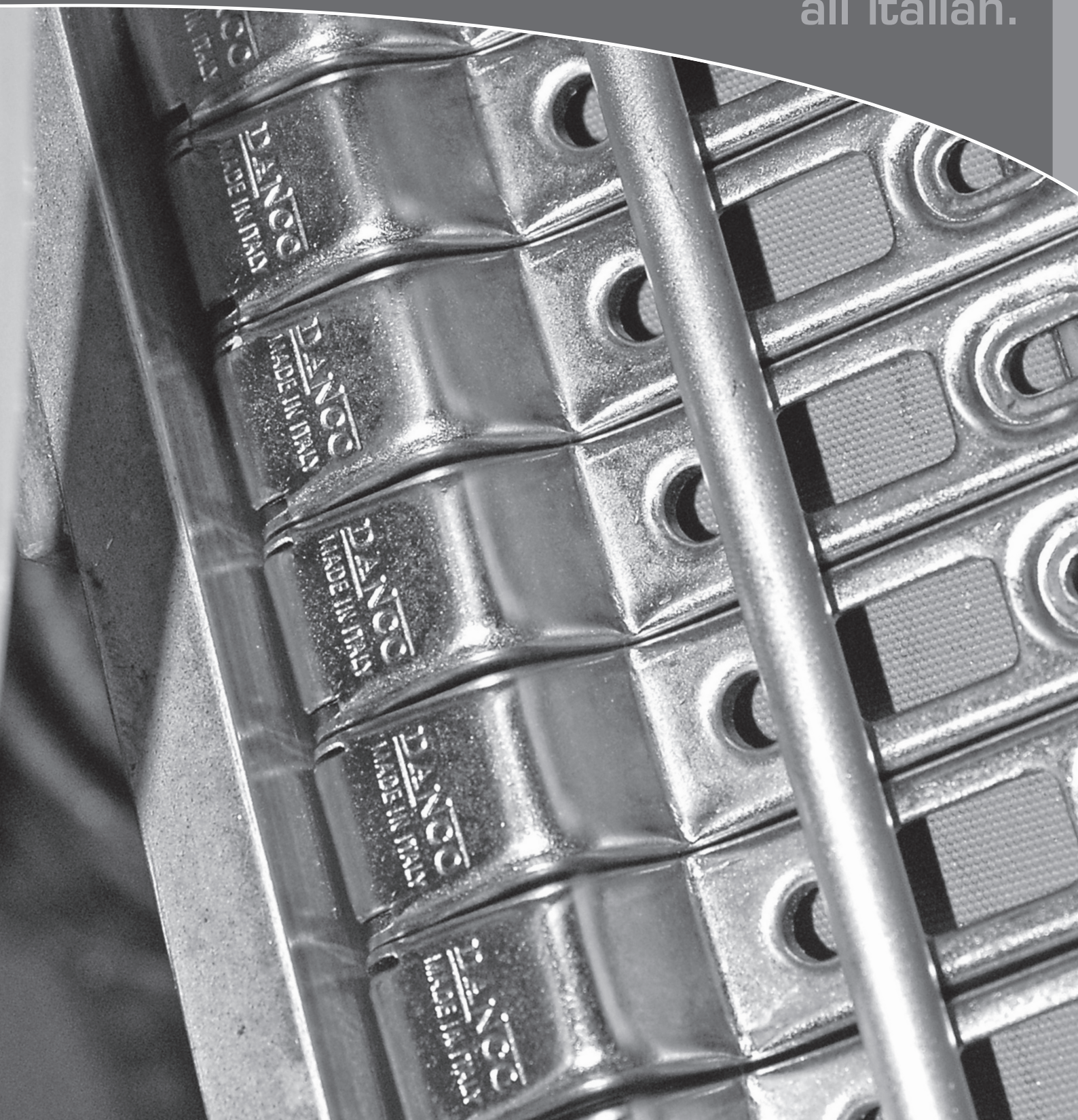


dal 1956

i nostri prodotti hanno un'anima
tutta italiana.

since 1956

our products have a spirit
all italian.



DANCO spa
20837 VEDUGGIO (MB) - via Volta, 12
Tel. +39 - 0362 998752 r.a.
Fax +39 - 0362 998730
danco@danco.it